

AFP Antibody (Ascites)

Mouse Monoclonal Antibody (Mab)

Catalog # AM1835b

Product Information

Application	WB, E
Primary Accession	P02771
Reactivity	Human
Host	Mouse
Clonality	Monoclonal
Isotype	IgM
Clone Names	143CT50.11.8
Calculated MW	68678
Antigen Region	56-85

Additional Information

Gene ID	174
Other Names	Alpha-fetoprotein, Alpha-1-fetoprotein, Alpha-fetoglobulin, AFP, HPAFP
Target/Specificity	This AFP antibody is generated from mice immunized with a KLH conjugated synthetic peptide between 56-85 amino acids from human AFP.
Dilution	WB~~1:500~1000 E~~Use at an assay dependent concentration.
Format	Mouse monoclonal antibody supplied in crude ascites with 0.09% (W/V) sodium azide.
Storage	Maintain refrigerated at 2-8°C for up to 2 weeks. For long term storage store at -20°C in small aliquots to prevent freeze-thaw cycles.
Precautions	AFP Antibody (Ascites) is for research use only and not for use in diagnostic or therapeutic procedures.

Protein Information

Name	AFP
Synonyms	HPAFP
Function	Binds copper, nickel, and fatty acids as well as, and bilirubin less well than, serum albumin. Only a small percentage (less than 2%) of the human AFP shows estrogen-binding properties.
Cellular Location	Secreted.

Background

This gene encodes alpha-fetoprotein, a major plasma protein produced by the yolk sac and the liver during fetal life. Alpha-fetoprotein expression in adults is often associated with hepatoma or teratoma. However, hereditary persistence of alpha-fetoprotein may also be found in individuals with no obvious pathology. The protein is thought to be the fetal counterpart of serum albumin, and the alpha-fetoprotein and albumin genes are present in tandem in the same transcriptional orientation on chromosome 4. Alpha-fetoprotein is found in monomeric as well as dimeric and trimeric forms, and binds copper, nickel, fatty acids and bilirubin. The level of alpha-fetoprotein in amniotic fluid is used to measure renal loss of protein to screen for spina bifida and anencephaly.

References

Clinicopathologic features and prognostic factors in alpha-fetoprotein-producing gastric cancers: analysis of 104 cases. Liu X, et al. J Surg Oncol, 2010 Sep 1. PMID 20740583.

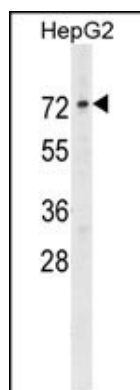
Alpha-fetoprotein and tumour size are associated with microvascular invasion in explanted livers of patients undergoing transplantation with hepatocellular carcinoma. McHugh PP, et al. HPB (Oxford), 2010 Feb. PMID 20495646.

Differential diagnosis of liver diseases using serum biomarkers. Cujic D, et al. J BUON, 2010 Jan-Mar. PMID 20414942.

High-efficient expression, refolding and purification of functional recombinant C-terminal fragment of human alpha-fetoprotein. Sharapova OA, et al. Protein Expr Purif, 2010 Sep. PMID 20363333.

Alpha-fetoprotein producing cells act as cancer progenitor cells in human cholangiocarcinoma. Ishii T, et al. Cancer Lett, 2010 Aug 1. PMID 20149523.

Images



Western blot analysis of alpha 1 Fetoprotein Antibody (N-term) (Cat. #AM1835b) in HepG2 cell line lysates (35µg/lane).alpha 1 Fetoprotein (arrow) was detected using the purified Mab.

Please note: All products are 'FOR RESEARCH USE ONLY. NOT FOR USE IN DIAGNOSTIC OR THERAPEUTIC PROCEDURES'.