

MAP2 Antibody (Ascites)

Mouse Monoclonal Antibody (Mab)

Catalog # AM1853a

Product Information

Application	WB, IF, IHC-P, E
Primary Accession	P11137
Other Accession	NP_002365.3
Reactivity	Human
Host	Mouse
Clonality	Monoclonal
Isotype	IgG1,K
Clone Names	159CT34.12.3.4
Calculated MW	199526

Additional Information

Gene ID	4133
Other Names	Microtubule-associated protein 2, MAP-2, MAP2
Target/Specificity	This MAP2 Monoclonal antibody was raised using purified His-tagged recombinant human MAP2.
Dilution	WB~~1:1000 IF~~1:10~50 IHC-P~~1:100~500 E~~Use at an assay dependent concentration.
Format	Purified monoclonal antibody supplied in PBS with 0.09% (W/V) sodium azide. This antibody is purified through a protein G column, followed by dialysis against PBS.
Storage	Maintain refrigerated at 2-8°C for up to 2 weeks. For long term storage store at -20°C in small aliquots to prevent freeze-thaw cycles.
Precautions	MAP2 Antibody (Ascites) is for research use only and not for use in diagnostic or therapeutic procedures.

Protein Information

Name	MAP2
Function	The exact function of MAP2 is unknown but MAPs may stabilize the microtubules against depolymerization. They also seem to have a stiffening effect on microtubules.
Cellular Location	Cytoplasm, cytoskeleton. Cell projection, dendrite

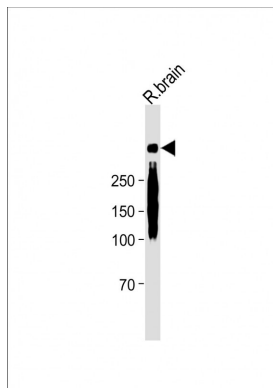
Background

The exact function of MAP2 is unknown but MAPs may stabilize the microtubules against depolymerization. They also seem to have a stiffening effect on microtubules.

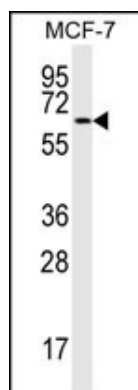
References

Albala J.S.et.al. Gene 136:377-378(1993).

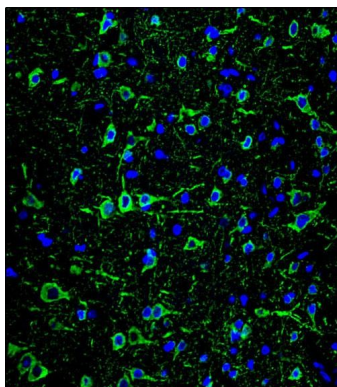
Images



All lanes: Anti-MAP2 Antibody at 1:1000 dilution + Rat brain lysate Lysates/proteins at 20 µg per lane. Secondary: Goat Anti-Mouse IgG, (H+L), Peroxidase conjugated (ASP1613) at 1/8000 dilution. Observed band size: 280 KDa Blocking/Dilution buffer: 5% NFDM/TBST.



MAP2 Antibody (Cat. #AM1853a) western blot analysis in MCF-7 cell line lysates (15µg/lane).This demonstrates the MAP2 antibody detected the MAP2 protein (arrow).(1:1000)



Confocal immunofluorescent analysis of MAP2 Antibody (Cat#AM1853a) with brain tissue followed by Alexa Fluor® 488-conjugated goat anti-mouse IgG (green). DAPI was used to stain the cell nuclear (blue).

MAP2 Antibody (Ascites) (Cat. #AM1853a)immunohistochemistry analysis in formalin fixed and paraffin embedded human brain tissue followed by peroxidase conjugation of the secondary antibody and DAB staining.This data demonstrates the



use of MAP2 Antibody (Ascites) for immunohistochemistry. Clinical relevance has not been evaluated.

Please note: All products are 'FOR RESEARCH USE ONLY. NOT FOR USE IN DIAGNOSTIC OR THERAPEUTIC PROCEDURES'.