

MAP2 Antibody

Mouse Monoclonal Antibody (Mab)

Catalog # AM1853b

Product Information

Application	WB, E
Primary Accession	P11137
Other Accession	NP_002365.3
Reactivity	Mouse
Host	Mouse
Clonality	Monoclonal
Isotype	IgG1,K
Clone Names	159CT34.12.3.4
Calculated MW	199526

Additional Information

Gene ID	4133
Other Names	Microtubule-associated protein 2, MAP-2, MAP2
Target/Specificity	This MAP2 monoclonal antibody is generated from mouse immunized with MAP2 recombinant protein.
Dilution	WB~~1:500~1:1000 E~~Use at an assay dependent concentration.
Format	Purified monoclonal antibody supplied in PBS with 0.09% (W/V) sodium azide. This antibody is purified through a protein G column, followed by dialysis against PBS.
Storage	Maintain refrigerated at 2-8°C for up to 2 weeks. For long term storage store at -20°C in small aliquots to prevent freeze-thaw cycles.
Precautions	MAP2 Antibody is for research use only and not for use in diagnostic or therapeutic procedures.

Protein Information

Name	MAP2
Function	The exact function of MAP2 is unknown but MAPs may stabilize the microtubules against depolymerization. They also seem to have a stiffening effect on microtubules.
Cellular Location	Cytoplasm, cytoskeleton. Cell projection, dendrite {ECO:0000250 UniProtKB:P20357}

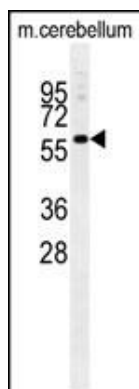
Background

The exact function of MAP2 is unknown but MAPs may stabilize the microtubules against depolymerization. They also seem to have a stiffening effect on microtubules.

References

Albala J.S.et.al. Gene 136:377-378(1993).

Images



MAP2 Antibody (Cat. #AM1853b) western blot analysis in mouse cerebellum tissue lysates (35µg/lane). This demonstrates the MAP2 antibody detected the MAP2 protein (arrow).

Please note: All products are 'FOR RESEARCH USE ONLY. NOT FOR USE IN DIAGNOSTIC OR THERAPEUTIC PROCEDURES'.