

RPS6KB2 Antibody

Mouse Monoclonal Antibody (Mab)

Catalog # AM1854b

Product Information

Application	WB, E
Primary Accession	Q9UBS0
Other Accession	NP_003943.2
Reactivity	Human, Mouse
Host	Mouse
Clonality	Monoclonal
Isotype	IgG1,K
Clone Names	164CT21.2.2
Calculated MW	53455

Additional Information

Gene ID	6199
Other Names	Ribosomal protein S6 kinase beta-2, S6K-beta-2, S6K2, 70 kDa ribosomal protein S6 kinase 2, P70S6K2, p70-S6K 2, S6 kinase-related kinase, SRK, Serine/threonine-protein kinase 14B, p70 ribosomal S6 kinase beta, S6K-beta, p70 S6 kinase beta, p70 S6K-beta, p70 S6KB, p70-beta, RPS6KB2, STK14B
Target/Specificity	This RPS6KB2 monoclonal antibody is generated from mouse immunized with RPS6KB2 recombinant protein.
Dilution	WB~~1:1000 E~~Use at an assay dependent concentration.
Format	Purified monoclonal antibody supplied in PBS with 0.09% (W/V) sodium azide. This antibody is purified through a protein G column, followed by dialysis against PBS.
Storage	Maintain refrigerated at 2-8°C for up to 2 weeks. For long term storage store at -20°C in small aliquots to prevent freeze-thaw cycles.
Precautions	RPS6KB2 Antibody is for research use only and not for use in diagnostic or therapeutic procedures.

Protein Information

Name	RPS6KB2
Synonyms	STK14B
Function	Phosphorylates specifically ribosomal protein S6 (PubMed: 29750193).

Seems to act downstream of mTOR signaling in response to growth factors and nutrients to promote cell proliferation, cell growth and cell cycle progression in an alternative pathway regulated by MEAK7 (PubMed:[29750193](#)).

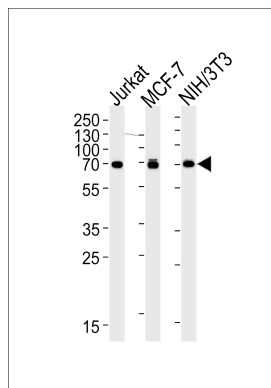
Cellular Location

Cytoplasm. Nucleus.

Background

Phosphorylates specifically ribosomal protein S6.

Images



RPS6KB2 Antibody (Cat.# AM1854b) western blot analysis in Jurkat, MCF-7, mouse NIH/3T3 cell lysates (35µg/lane). This demonstrates that the RPS6KB2 antibody detected RPS6KB2 protein (arrow).

Please note: All products are 'FOR RESEARCH USE ONLY. NOT FOR USE IN DIAGNOSTIC OR THERAPEUTIC PROCEDURES'.