

# MCFD2 Antibody

Mouse Monoclonal Antibody (Mab)

Catalog # AM1856b

## Product Information

---

<b>Application</b>	WB, E
<b>Primary Accession</b>	<a href="#">Q8NI22</a>
<b>Other Accession</b>	<a href="#">NP_001164977.1</a>
<b>Reactivity</b>	Human
<b>Host</b>	Mouse
<b>Clonality</b>	Monoclonal
<b>Isotype</b>	IgG1,K
<b>Clone Names</b>	165CT13.1.6
<b>Calculated MW</b>	16390

## Additional Information

---

<b>Gene ID</b>	90411
<b>Other Names</b>	Multiple coagulation factor deficiency protein 2, Neural stem cell-derived neuronal survival protein, MCFD2, SDNSF
<b>Target/Specificity</b>	This MCFD2 monoclonal antibody is generated from mouse immunized with MCFD2 recombinant protein.
<b>Dilution</b>	WB~~1:100~500 E~~Use at an assay dependent concentration.
<b>Format</b>	Purified monoclonal antibody supplied in PBS with 0.09% (W/V) sodium azide. This antibody is purified through a protein G column, followed by dialysis against PBS.
<b>Storage</b>	Maintain refrigerated at 2-8°C for up to 2 weeks. For long term storage store at -20°C in small aliquots to prevent freeze-thaw cycles.
<b>Precautions</b>	MCFD2 Antibody is for research use only and not for use in diagnostic or therapeutic procedures.

## Protein Information

---

<b>Name</b>	MCFD2
<b>Synonyms</b>	SDNSF
<b>Function</b>	The MCFD2-LMAN1 complex forms a specific cargo receptor for the ER-to-Golgi transport of selected proteins. Plays a role in the secretion of coagulation factors.

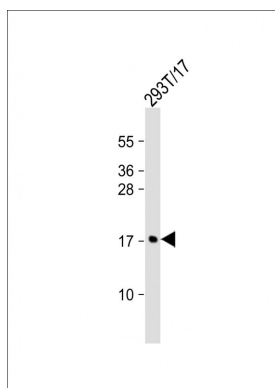
## Cellular Location

Endoplasmic reticulum-Golgi intermediate compartment. Endoplasmic reticulum. Golgi apparatus

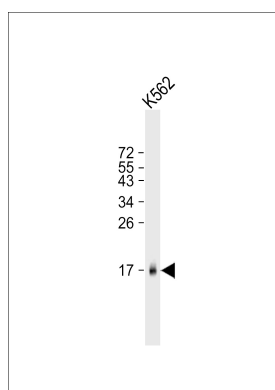
## Background

The MCFD2-LMAN1 complex forms a specific cargo receptor for the ER-to-Golgi transport of selected proteins. Plays a role in the secretion of coagulation factors.

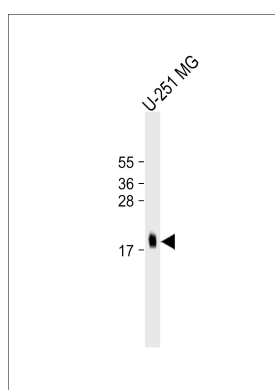
## Images



Anti-MCFD2 Antibody at 1:1000 dilution + 293T/17 whole cell lysate Lysates/proteins at 20 µg per lane. Secondary Goat Anti-mouse IgG, (H+L), Peroxidase conjugated at 1/10000 dilution. Predicted band size : 16 kDa  
Blocking/Dilution buffer: 5% NFDm/TBST.



Anti-MCFD2 Antibody at 1:500 dilution + K562 whole cell lysate Secondary Goat Anti-mouse IgG, (H+L), Peroxidase conjugated at 1/10000 dilution. Predicted band size : 16390 Da  
Blocking/Dilution buffer: 5% NFDm/TBST.



Anti-MCFD2 Antibody at 1:1000 dilution + U-251 MG whole cell lysate Secondary Goat Anti-mouse IgG, (H+L), Peroxidase conjugated at 1/10000 dilution. Predicted band size : 16390 Da  
Blocking/Dilution buffer: 5% NFDm/TBST.

Please note: All products are 'FOR RESEARCH USE ONLY. NOT FOR USE IN DIAGNOSTIC OR THERAPEUTIC PROCEDURES'.