

MIPEP Antibody

Mouse Monoclonal Antibody (Mab)

Catalog # AM1857b

Product Information

Application	WB, E
Primary Accession	Q99797
Other Accession	NP_005923.2
Reactivity	Human
Host	Mouse
Clonality	Monoclonal
Isotype	IgG1,K
Clone Names	166CT22.3.7
Calculated MW	80641

Additional Information

Gene ID	4285
Other Names	Mitochondrial intermediate peptidase, MIP, MIPEP, MIP
Target/Specificity	This MIPEP monoclonal antibody is generated from mouse immunized with MIPEP recombinant protein.
Dilution	WB~~1:100~1000 E~~Use at an assay dependent concentration.
Format	Purified monoclonal antibody supplied in PBS with 0.09% (W/V) sodium azide. This antibody is purified through a protein G column, followed by dialysis against PBS.
Storage	Maintain refrigerated at 2-8°C for up to 2 weeks. For long term storage store at -20°C in small aliquots to prevent freeze-thaw cycles.
Precautions	MIPEP Antibody is for research use only and not for use in diagnostic or therapeutic procedures.

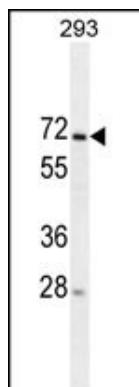
Protein Information

Name	MIPEP
Synonyms	MIP
Function	Cleaves proteins, imported into the mitochondrion, to their mature size.
Cellular Location	Mitochondrion matrix.

Background

Cleaves proteins, imported into the mitochondrion, to their mature size.

Images



MIPEP Antibody (Cat. #AM1857b) western blot analysis in 293 cell line lysates (35µg/lane). This demonstrates the MIPEP antibody detected the MIPEP protein (arrow).

Please note: All products are 'FOR RESEARCH USE ONLY. NOT FOR USE IN DIAGNOSTIC OR THERAPEUTIC PROCEDURES'.