

Interferon-alpha Antibody

Mouse Monoclonal Antibody (Mab)

Catalog # AM1913b

Product Information

Application	WB, E
Primary Accession	P01562
Reactivity	Human
Host	Mouse
Clonality	Monoclonal
Isotype	IgG1,k
Clone Names	278CT1
Calculated MW	21725

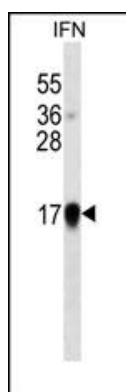
Additional Information

Gene ID	3439;3447
Other Names	Interferon alpha-1/13, IFN-alpha-1/13, Interferon alpha-D, LeIF D, IFNA1
Target/Specificity	This Interferon-alpha monoclonal antibody is generated from mouse immunized with Interferon-alpha recombinant protein.
Dilution	WB~~1:500~1:1000 E~~Use at an assay dependent concentration.
Format	Purified monoclonal antibody supplied in PBS with 0.09% (W/V) sodium azide. This antibody is purified through a protein G column, followed by dialysis against PBS.
Storage	Maintain refrigerated at 2-8°C for up to 2 weeks. For long term storage store at -20°C in small aliquots to prevent freeze-thaw cycles.
Precautions	Interferon-alpha Antibody is for research use only and not for use in diagnostic or therapeutic procedures.

Protein Information

Name	IFNA1
Function	Produced by macrophages, IFN-alpha have antiviral activities. Interferon stimulates the production of two enzymes: a protein kinase and an oligoadenylate synthetase.
Cellular Location	Secreted.

Images



Interferon-alpha western blot analysis in IFN cell line lysates (35µg/lane). This demonstrates the Interferon-alpha antibody detected the Interferon-alpha protein (arrow).

Please note: All products are 'FOR RESEARCH USE ONLY. NOT FOR USE IN DIAGNOSTIC OR THERAPEUTIC PROCEDURES'.