

RPS6KL1 Antibody

Mouse Monoclonal Antibody (Mab)

Catalog # AM1925b

Product Information

Application	WB, E
Primary Accession	Q9Y6S9
Other Accession	NP_113652.1
Reactivity	Hamster, Mouse
Host	Mouse
Clonality	Monoclonal
Isotype	IgM,k
Clone Names	273CT4.5.3
Calculated MW	60036

Additional Information

Gene ID	83694
Other Names	Ribosomal protein S6 kinase-like 1, RPS6KL1
Target/Specificity	This RPS6KL1 monoclonal antibody is generated from mouse immunized with RPS6KL1 recombinant protein.
Dilution	WB~~1:500~1000 E~~Use at an assay dependent concentration.
Format	Purified polyclonal antibody supplied in PBS with 0.05% (V/V) Proclin 300. This antibody is prepared by Saturated Ammonium Sulfate (SAS) precipitation followed by dialysis against PBS.
Storage	Maintain refrigerated at 2-8°C for up to 2 weeks. For long term storage store at -20°C in small aliquots to prevent freeze-thaw cycles.
Precautions	RPS6KL1 Antibody is for research use only and not for use in diagnostic or therapeutic procedures.

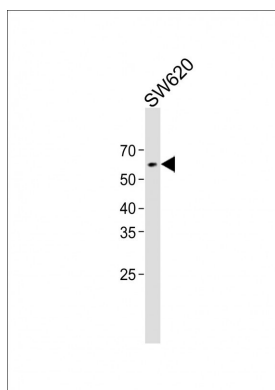
Protein Information

Name	RPS6KL1
-------------	---------

References

Heilig, R., et al. Nature 421(6923):601-607(2003)

Images



All lanes: Anti-RPS6KL1 Antibody at 1:1000 dilution + SW620 whole cell lysate Lysates/proteins at 20 µg per lane. Secondary: Goat Anti-Mouse IgG, (H+L), Peroxidase conjugated (ASP1613) at 1/8000 dilution. Observed band size: 59 KDa Blocking/Dilution buffer: 5% NFDm/TBST.

Please note: All products are 'FOR RESEARCH USE ONLY. NOT FOR USE IN DIAGNOSTIC OR THERAPEUTIC PROCEDURES'.