

LHX2 Antibody

Mouse Monoclonal Antibody (Mab)

Catalog # AM1927b

Product Information

Application	WB, E
Primary Accession	P50458
Other Accession	NP_004780.3
Reactivity	Human
Host	Mouse
Clonality	Monoclonal
Isotype	IgM,k
Clone Names	285CT11.1.1
Calculated MW	44373

Additional Information

Gene ID	9355
Other Names	LIM/homeobox protein Lhx2, Homeobox protein LH-2, LIM homeobox protein 2, LHX2, LH2
Target/Specificity	This LHX2 monoclonal antibody is generated from mouse immunized with LHX2 recombinant protein.
Dilution	WB~~1:500~1000 E~~Use at an assay dependent concentration.
Format	Purified monoclonal antibody supplied in PBS with 0.09% (W/V) sodium azide. This antibody is prepared by Euglobin precipitation followed by dialysis against PBS.
Storage	Maintain refrigerated at 2-8°C for up to 2 weeks. For long term storage store at -20°C in small aliquots to prevent freeze-thaw cycles.
Precautions	LHX2 Antibody is for research use only and not for use in diagnostic or therapeutic procedures.

Protein Information

Name	LHX2
Synonyms	LH2
Function	Acts as a transcriptional activator. Stimulates the promoter of the alpha-glycoprotein gene. Transcriptional regulatory protein involved in the control of cell differentiation in developing lymphoid and neural cell types (By

similarity).

Cellular Location

Nucleus.

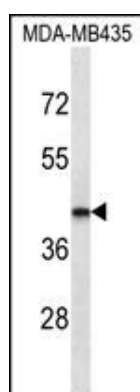
Background

This gene encodes a protein belonging to a large protein family, members of which carry the LIM domain, a unique cysteine-rich zinc-binding domain. The encoded protein may function as a transcriptional regulator. The protein can recapitulate or rescue phenotypes in *Drosophila* caused by a related protein, suggesting conservation of function during evolution. [provided by RefSeq].

References

Cirulli, E.T., et al. *Eur. J. Hum. Genet.* 18(7):815-820(2010)
Glenn, D.J., et al. *J. Biol. Chem.* 274(51):36159-36167(1999)
Bach, I., et al. *Nat. Genet.* 22(4):394-399(1999)
Rincon-Limas, D.E., et al. *Proc. Natl. Acad. Sci. U.S.A.* 96(5):2165-2170(1999)
Bendall, A.J., et al. *Differentiation* 63(3):151-157(1998)

Images



LHX2 Antibody (Cat. #AM1927b) western blot analysis in MDA-MB435 cell line lysates (35µg/lane). This demonstrates the LHX2 antibody detected the LHX2 protein (arrow).

Please note: All products are 'FOR RESEARCH USE ONLY. NOT FOR USE IN DIAGNOSTIC OR THERAPEUTIC PROCEDURES'.