

SYP Antibody (C-term)

Mouse Monoclonal Antibody (Mab)

Catalog # AM1945b

Product Information

Application	WB, E
Primary Accession	P08247
Other Accession	P07825 , Q62277 , NP_003170.1
Reactivity	Mouse
Predicted	Rat
Host	Mouse
Clonality	Monoclonal
Isotype	IgM,k
Clone Names	298CT23.4.4
Calculated MW	33845
Antigen Region	225-253

Additional Information

Gene ID	6855
Other Names	Synaptophysin, Major synaptic vesicle protein p38, SYP
Target/Specificity	This SYP antibody is generated from mice immunized with a KLH conjugated synthetic peptide between 225-253 amino acids from the C-terminal region of human SYP.
Dilution	WB~~1:500~1:1000 E~~Use at an assay dependent concentration.
Format	Purified monoclonal antibody supplied in PBS with 0.09% (W/V) sodium azide. This antibody is prepared by Euglobin precipitation followed by dialysis against PBS.
Storage	Maintain refrigerated at 2-8°C for up to 2 weeks. For long term storage store at -20°C in small aliquots to prevent freeze-thaw cycles.
Precautions	SYP Antibody (C-term) is for research use only and not for use in diagnostic or therapeutic procedures.

Protein Information

Name	SYP
Function	Possibly involved in structural functions as organizing other membrane components or in targeting the vesicles to the plasma membrane. Involved in the regulation of short-term and long-term synaptic plasticity (By similarity).

Cellular Location	Cytoplasmic vesicle, secretory vesicle, synaptic vesicle membrane; Multi-pass membrane protein. Synapse, synaptosome
Tissue Location	Expressed in the brain, with expression in the hippocampus, the neuropil in the dentate gyrus, where expression is higher in the outer half of the molecular layer than in the inner half, and in the neuropil of CA4 and CA3 (PubMed:8838578). Expressed in the putamen (at protein level) (PubMed:17296554)

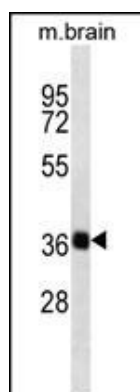
Background

Synaptophysin (p38) is an integral membrane protein of small synaptic vesicles in brain and endocrine cells.[supplied by OMIM].

References

Ishida, M., et al. *Oncol. Rep.* 22(4):733-737(2009)
Sterlacci, W., et al. *Virchows Arch.* 455(2):125-132(2009)
Head, E., et al. *Neurobiol. Aging* 30(7):1125-1134(2009)
Gulubova, M., et al. *J. Gastroenterol. Hepatol.* 23(10):1574-1585(2008)
Glantz, L.A., et al. *Neuroscience* 149(3):582-591(2007)

Images



SYP Antibody (C-term) (Cat. #AM1945b) western blot analysis in mouse brain tissue lysates (35µg/lane). This demonstrates the SYP antibody detected the SYP protein (arrow).

Please note: All products are 'FOR RESEARCH USE ONLY. NOT FOR USE IN DIAGNOSTIC OR THERAPEUTIC PROCEDURES'.