

STC2 Antibody

Mouse Monoclonal Antibody (Mab)

Catalog # AM1955b

Product Information

Application	WB, E
Primary Accession	O76061
Other Accession	NP_003705.1
Reactivity	Human
Host	Mouse
Clonality	Monoclonal
Isotype	IgA,k
Clone Names	339CT13.2.6
Calculated MW	33249

Additional Information

Gene ID	8614
Other Names	Stanniocalcin-2, STC-2, Stanniocalcin-related protein, STC-related protein, STCRP, STC2
Target/Specificity	This STC2 monoclonal antibody is generated from mouse immunized with STC2 recombinant protein.
Dilution	WB~~1:500~1000 E~~Use at an assay dependent concentration.
Format	Purified polyclonal antibody supplied in PBS with 0.05% (V/V) Proclin 300. This antibody is prepared by Saturated Ammonium Sulfate (SAS) precipitation followed by dialysis against PBS.
Storage	Maintain refrigerated at 2-8°C for up to 2 weeks. For long term storage store at -20°C in small aliquots to prevent freeze-thaw cycles.
Precautions	STC2 Antibody is for research use only and not for use in diagnostic or therapeutic procedures.

Protein Information

Name	STC2
Function	Has an anti-hypocalcemic action on calcium and phosphate homeostasis.
Cellular Location	Secreted.
Tissue Location	Expressed in a variety of tissues including muscle, heart, pancreas, kidney,

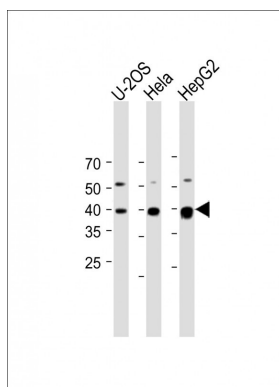
Background

This gene encodes a secreted, homodimeric glycoprotein that is expressed in a wide variety of tissues and may have autocrine or paracrine functions. The encoded protein has 10 of its 15 cysteine residues conserved among stanniocalcin family members and is phosphorylated by casein kinase 2 exclusively on its serine residues. Its C-terminus contains a cluster of histidine residues which may interact with metal ions. The protein may play a role in the regulation of renal and intestinal calcium and phosphate transport, cell metabolism, or cellular calcium/phosphate homeostasis. Constitutive overexpression of human stanniocalcin 2 in mice resulted in pre- and postnatal growth restriction, reduced bone and skeletal muscle growth, and organomegaly. Expression of this gene is induced by estrogen and altered in some breast cancers.

References

Yokoyama, K., et al. Nephron Clin Pract 115 (4), C237-C243 (2010) :
Law, A.Y., et al. Exp. Cell Res. 316(3):466-476(2010)
Volland, S., et al. Int. J. Cancer 125(9):2049-2057(2009)
Ieta, K., et al. Int. J. Cancer 125(4):926-931(2009)
Tamura, K., et al. Cancer Sci. 100(5):914-919(2009)

Images



All lanes: Anti-STC2 Antibody at 1:1000 dilution Lane 1:
U-2OS whole cell lysate Lane 2: HeLa whole cell lysate
Lane 3: HepG2 whole cell lysate Lysates/proteins at 20 µg
per lane. Secondary: Goat Anti-Mouse IgG, (H+L),
Peroxidase conjugated (ASP1613) at 1/8000 dilution.
Observed band size: 38 KDa Blocking/Dilution buffer: 5%
NFDM/TBST.

Please note: All products are 'FOR RESEARCH USE ONLY. NOT FOR USE IN DIAGNOSTIC OR THERAPEUTIC PROCEDURES'.