

NCAM1 Antibody (Ascites)

Mouse Monoclonal Antibody (Mab)

Catalog # AM1960a

Product Information

Application	WB, E
Primary Accession	P13591
Other Accession	P13595 , NP_851996.2 , NP_000606.3
Reactivity	Human, Mouse
Host	Mouse
Clonality	Monoclonal
Isotype	IgG1
Clone Names	321CT11.4.4
Antigen Region	830-858

Additional Information

Other Names	Neural cell adhesion molecule 1, N-CAM-1, NCAM-1, CD56, NCAM1, NCAM
Target/Specificity	This NCAM1 antibody is generated from mice immunized with a KLH conjugated synthetic peptide between 830-858 amino acids from human NCAM1.
Dilution	WB~~1:1000 E~~Use at an assay dependent concentration.
Format	Mouse monoclonal antibody supplied in crude ascites with 0.09% (W/V) sodium azide.
Storage	Maintain refrigerated at 2-8°C for up to 2 weeks. For long term storage store at -20°C in small aliquots to prevent freeze-thaw cycles.
Precautions	NCAM1 Antibody (Ascites) is for research use only and not for use in diagnostic or therapeutic procedures.

Protein Information

Background

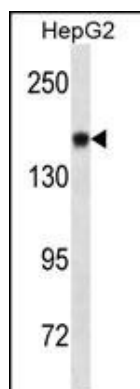
This protein is a cell adhesion molecule involved in neuron-neuron adhesion, neurite fasciculation, outgrowth of neurites, etc.

References

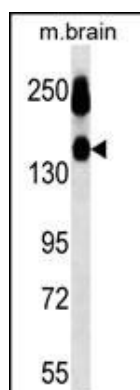
Foley, D.A., et al. J. Biol. Chem. 285(45):35056-35067(2010)

Bailey, S.D., et al. Diabetes Care 33(10):2250-2253(2010)
Kleene, R., et al. J. Biol. Chem. 285(37):28968-28979(2010)
Bojarska-Junak, A., et al. Oncol. Rep. 24(3):803-810(2010)
Gomyo, H., et al. Hematology 15(3):157-161(2010)

Images



NCAM1 Antibody (Cat. #AM1960a) western blot analysis in HepG2 cell line lysates (35µg/lane). This demonstrates the NCAM1 antibody detected the NCAM1 protein (arrow).



NCAM1 Antibody (Cat. #AM1960a) western blot analysis in mouse brain tissue lysates (35µg/lane). This demonstrates the NCAM1 antibody detected the NCAM1 protein (arrow).

Please note: All products are 'FOR RESEARCH USE ONLY. NOT FOR USE IN DIAGNOSTIC OR THERAPEUTIC PROCEDURES'.