

APCS Antibody (Ascites)

Mouse Monoclonal Antibody (Mab)

Catalog # AM1978a

Product Information

Application	WB, E
Primary Accession	P02743
Other Accession	NP_001630.1
Reactivity	Human
Host	Mouse
Clonality	Monoclonal
Isotype	IgG2a
Clone Names	342CT9.4.7
Calculated MW	25387

Additional Information

Gene ID	325
Other Names	Serum amyloid P-component, SAP, 95S alpha-1-glycoprotein, Serum amyloid P-component(1-203), APCS, PTX2
Target/Specificity	Purified His-tagged APCS protein(Fragment) was used to produced this monoclonal antibody.
Dilution	WB~~1:500~4000 E~~Use at an assay dependent concentration.
Format	Mouse monoclonal antibody supplied in crude ascites with 0.09% (W/V) sodium azide.
Storage	Maintain refrigerated at 2-8°C for up to 2 weeks. For long term storage store at -20°C in small aliquots to prevent freeze-thaw cycles.
Precautions	APCS Antibody (Ascites) is for research use only and not for use in diagnostic or therapeutic procedures.

Protein Information

Name	APCS
Synonyms	PTX2
Function	Can interact with DNA and histones and may scavenge nuclear material released from damaged circulating cells. May also function as a calcium-dependent lectin.

Cellular Location	Secreted.
Tissue Location	Found in serum and urine.

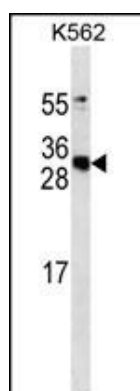
Background

The protein encoded by this gene is a glycoprotein, belonging to the pentraxin family of proteins, which has a characteristic pentameric organization. These family members have considerable sequence homology which is thought to be the result of gene duplication. The binding of the encoded protein to proteins in the pathological amyloid cross-beta fold suggests its possible role as a chaperone. This protein is also thought to control the degradation of chromatin. It has been demonstrated that this protein binds to apoptotic cells at an early stage, which raises the possibility that it is involved in dealing with apoptotic cells in vivo.

References

Song, Z., et al. *Atherosclerosis* 211(1):90-95(2010)
 Davila, S., et al. *Genes Immun.* 11(3):232-238(2010)
 McGeachie, M., et al. *Circulation* 120(24):2448-2454(2009)
 Lu, J., et al. *Nature* 456(7224):989-992(2008)
 Verwey, N.A., et al. *Dement Geriatr Cogn Disord* 26(6):522-527(2008)

Images



APCS antibody (Cat. #AM1978a) western blot analysis in K562 cell line lysates (35µg/lane). This demonstrates the APCS antibody detected the APCS protein (arrow).

Please note: All products are 'FOR RESEARCH USE ONLY. NOT FOR USE IN DIAGNOSTIC OR THERAPEUTIC PROCEDURES'.