

IHH Antibody (C-term) (Ascites)

Mouse Monoclonal Antibody (Mab)

Catalog # AM1981a

Product Information

Application	WB, E
Primary Accession	Q14623
Other Accession	O75473 , F1MT22 , NP_034674.1
Reactivity	Human
Predicted	Bovine
Host	Mouse
Clonality	Monoclonal
Isotype	IgG3
Clone Names	363CT4.1.6
Calculated MW	45251

Additional Information

Gene ID	3549
Other Names	Indian hedgehog protein, IHH, HHG-2, Indian hedgehog protein N-product, Indian hedgehog protein C-product, IHH
Target/Specificity	This IHH Monoclonal antibody is generated from mice immunized with a KLH conjugated synthetic peptide selected from the C-terminal region of human IHH.
Dilution	WB~~1:500~8000 E~~Use at an assay dependent concentration.
Format	Mouse monoclonal antibody supplied in crude ascites with 0.09% (W/V) sodium azide.
Storage	Maintain refrigerated at 2-8°C for up to 2 weeks. For long term storage store at -20°C in small aliquots to prevent freeze-thaw cycles.
Precautions	IHH Antibody (C-term) (Ascites) is for research use only and not for use in diagnostic or therapeutic procedures.

Protein Information

Name	IHH (HGNC:5956)
Function	Plays a role in embryonic morphogenesis; it is involved in the regulation of endochondral skeleton formation, and the development of retinal pigment epithelium (RPE), photoreceptors and periocular tissues (By similarity).

Cellular Location	[Indian hedgehog protein N-product]: Cell membrane; Lipid-anchor {ECO:0000250 UniProtKB:Q62226}. Note=The N-product remains associated with the cell surface. {ECO:0000250 UniProtKB:Q15465}
Tissue Location	Expressed in embryonic lung, and in adult kidney and liver

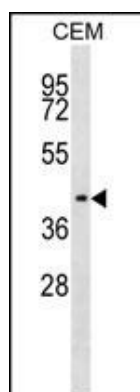
Background

Intercellular signal essential for a variety of patterning events during development. Binds to the patched (PTC) receptor, which functions in association with smoothened (SMO), to activate the transcription of target genes. Implicated in endochondral ossification: may regulate the balance between growth and ossification of the developing bones. Induces the expression of parathyroid hormone-related protein (PTHrP).

References

van Dop, W.A., et al. Gastroenterology 139(5):1665-1676(2010) Koike, S., et al. Biochem. Biophys. Res. Commun. 400(1):66-71(2010) Rice, D.P., et al. Hum. Mol. Genet. 19(17):3457-3467(2010) Witte, F., et al. Proc. Natl. Acad. Sci. U.S.A. 107(32):14211-14216(2010) Lyashenko, N., et al. Dev. Dyn. 239(8):2266-2277(2010)

Images



IHH antibody (C-term) (Cat. #AM1981a) western blot analysis in CEM cell line lysates (35µg/lane). This demonstrates the IHH antibody detected the IHH protein (arrow).

Please note: All products are 'FOR RESEARCH USE ONLY. NOT FOR USE IN DIAGNOSTIC OR THERAPEUTIC PROCEDURES'.