

TLE1 Antibody (Center)

Mouse Monoclonal Antibody (Mab)

Catalog # AM1982b

Product Information

Application	WB, E
Primary Accession	Q04724
Other Accession	NP_005068.2
Reactivity	Human
Host	Mouse
Clonality	Monoclonal
Isotype	IgG1
Clone Names	381CT18.5.1
Calculated MW	83201
Antigen Region	199-228

Additional Information

Gene ID	7088
Other Names	Transducin-like enhancer protein 1, E(Sp1) homolog, Enhancer of split groucho-like protein 1, ESG1, TLE1
Target/Specificity	This TLE1 antibody is generated from mice immunized with a KLH conjugated synthetic peptide between 199-228 amino acids from the Central region of human TLE1.
Dilution	WB~~1:500~1000 E~~Use at an assay dependent concentration.
Format	Purified monoclonal antibody supplied in PBS with 0.09% (W/V) sodium azide. This antibody is purified through a protein G column, followed by dialysis against PBS.
Storage	Maintain refrigerated at 2-8°C for up to 2 weeks. For long term storage store at -20°C in small aliquots to prevent freeze-thaw cycles.
Precautions	TLE1 Antibody (Center) is for research use only and not for use in diagnostic or therapeutic procedures.

Protein Information

Name	TLE1
Function	Transcriptional corepressor that binds to a number of transcription factors. Inhibits NF-kappa-B-regulated gene expression. Inhibits the transcriptional activation mediated by FOXA2, and by CTNNB1 and TCF family members in

Wnt signaling. Enhances FOXG1/BF- 1- and HES1-mediated transcriptional repression (By similarity). The effects of full-length TLE family members may be modulated by association with dominant-negative AES. Unusual function as coactivator for ESRRG.

Cellular Location

Nucleus. Note=Nuclear and chromatin-associated, depending on isoforms and phosphorylation status. Hyperphosphorylation decreases the affinity for nuclear components

Tissue Location

In all tissues examined, mostly in brain, liver and muscle

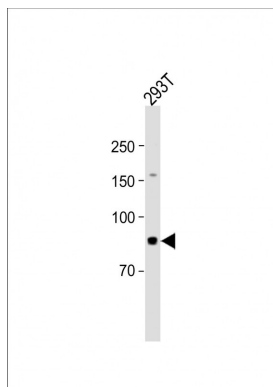
Background

Transcriptional corepressor that binds to a number of transcription factors. Inhibits NF-kappa-B-regulated gene expression. Inhibits the transcriptional activation mediated by FOXA2, and by CTNNB1 and TCF family members in Wnt signaling. The effects of full-length TLE family members may be modulated by association with dominant-negative AES. Unusual function as coactivator for ESRRG.

References

Rose, J.E., et al. Mol. Med. 16 (7-8), 247-253 (2010) :
Carvalho, L.R., et al. Mol. Endocrinol. 24(4):754-765(2010)
Ali, S.A., et al. Proc. Natl. Acad. Sci. U.S.A. 107(9):4165-4169(2010)
Jagdis, A., et al. Am. J. Surg. Pathol. 33(12):1743-1751(2009)
Buscarlet, M., et al. PLoS ONE 4 (12), E8107 (2009) :

Images



All lanes: Anti-TLE1 Antibody (Center) at 1:1000 dilution + 293T whole cell lysate Lysates/proteins at 20 µg per lane. Secondary: Goat Anti-Mouse IgG, (H+L), Peroxidase conjugated (ASP1613) at 1/8000 dilution. Observed band size: 83 KDa Blocking/Dilution buffer: 5% NFDM/TBST.

Please note: All products are 'FOR RESEARCH USE ONLY. NOT FOR USE IN DIAGNOSTIC OR THERAPEUTIC PROCEDURES'.