

MS4A1/CD20 Antibody (C-term)

Mouse Monoclonal Antibody (Mab)

Catalog # AM1990b

Product Information

Application	WB, IHC-P, E
Primary Accession	P11836
Other Accession	NP_690605.1 , NP_068769.2
Reactivity	Human
Host	Mouse
Clonality	Monoclonal
Isotype	IgG1
Clone Names	407CT20.1.2
Calculated MW	33077
Antigen Region	266-294

Additional Information

Gene ID	931
Other Names	B-lymphocyte antigen CD20, B-lymphocyte surface antigen B1, Bp35, Leukocyte surface antigen Leu-16, Membrane-spanning 4-domains subfamily A member 1, CD20, MS4A1, CD20
Target/Specificity	This MS4A1/CD20 antibody is generated from mice immunized with a KLH conjugated synthetic peptide between 266-294 amino acids from the C-terminal region of human MS4A1/CD20.
Dilution	WB~~1:500~1000 IHC-P~~1:1000 E~~Use at an assay dependent concentration.
Format	Purified polyclonal antibody supplied in PBS with 0.09% (W/V) sodium azide. This antibody is prepared by Saturated Ammonium Sulfate (SAS) precipitation followed by dialysis against PBS.
Storage	Maintain refrigerated at 2-8°C for up to 2 weeks. For long term storage store at -20°C in small aliquots to prevent freeze-thaw cycles.
Precautions	MS4A1/CD20 Antibody (C-term) is for research use only and not for use in diagnostic or therapeutic procedures.

Protein Information

Name	MS4A1
Synonyms	CD20

Function	B-lymphocyte-specific membrane protein that plays a role in the regulation of cellular calcium influx necessary for the development, differentiation, and activation of B-lymphocytes (PubMed: 12920111 , PubMed: 3925015 , PubMed: 7684739). Functions as a store-operated calcium (SOC) channel component promoting calcium influx after activation by the B-cell receptor/BCR (PubMed: 12920111 , PubMed: 18474602 , PubMed: 7684739).
Cellular Location	Cell membrane; Multi-pass membrane protein. Cell membrane; Lipid-anchor. Note=Constitutively associated with membrane rafts.
Tissue Location	Expressed on B-cells.

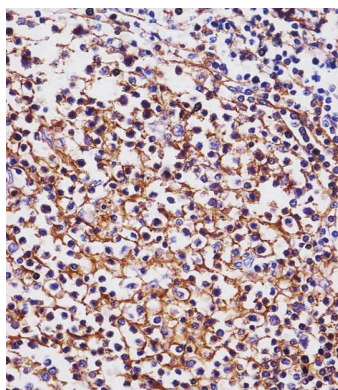
Background

This gene encodes a member of the membrane-spanning 4A gene family. Members of this nascent protein family are characterized by common structural features and similar intron/exon splice boundaries and display unique expression patterns among hematopoietic cells and nonlymphoid tissues. This gene encodes a B-lymphocyte surface molecule which plays a role in the development and differentiation of B-cells into plasma cells. This family member is localized to 11q12, among a cluster of family members. Alternative splicing of this gene results in two transcript variants which encode the same protein.

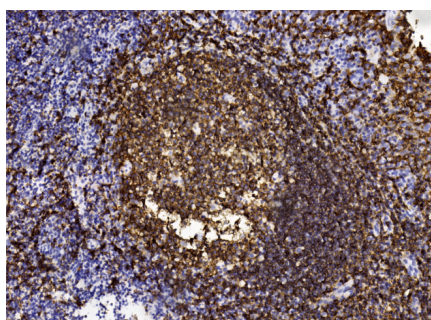
References

Weber, M.S., et al. Ann. Neurol. 68(3):369-383(2010)
Wu, D., et al. Am. J. Clin. Pathol. 134(2):258-265(2010)
de Haij, S., et al. Cancer Res. 70(8):3209-3217(2010)
Beers, S.A., et al. Semin. Hematol. 47(2):107-114(2010)
Davila, S., et al. Genes Immun. 11(3):232-238(2010)

Images

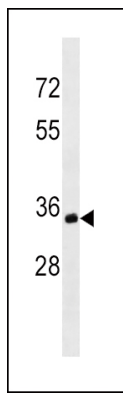


AM1990b staining MS4A1/CD20 in human tonsil tissue sections by Immunohistochemistry (IHC-P - paraformaldehyde-fixed, paraffin-embedded sections). Tissue was fixed with formaldehyde and blocked with 3% BSA for 0.5 hour at room temperature; antigen retrieval was by heat mediation with a citrate buffer (pH6). Samples were incubated with primary antibody (1/100) for 1 hours at 37°C. A undiluted biotinylated goat polyvalent antibody was used as the secondary antibody.



Immunohistochemical analysis of paraffin-embedded Human tonsil section using Pink1 (Cat#AM1990b). AM1990b was diluted at 1:1000 dilution. A undiluted biotinylated goat polyvalent antibody was used as the secondary, followed by DAB staining.

MS4A1/CD20 Antibody (C-term) (Cat. #AM1990b) western blot analysis in Ramos cell line lysates (35µg/lane). This



demonstrates the MS4A1/CD20 antibody detected the MS4A1/CD20 protein (arrow).

Please note: All products are 'FOR RESEARCH USE ONLY. NOT FOR USE IN DIAGNOSTIC OR THERAPEUTIC PROCEDURES'.