

# T Antibody (Ascites)

Mouse Monoclonal Antibody (Mab)

Catalog # AM1993a

## Product Information

---

Application	WB, E
Primary Accession	<a href="#">Q15178</a>
Other Accession	<a href="#">Q07998</a> , <a href="#">NP_003172.1</a>
Reactivity	Human
Predicted	Zebrafish
Host	Mouse
Clonality	Monoclonal
Isotype	IgM
Clone Names	394CT14.1.4
Calculated MW	47443
Antigen Region	201-228

## Additional Information

---

Gene ID	6862
Other Names	Brachyury protein, Protein T, T
Target/Specificity	This T antibody is generated from mice immunized with a KLH conjugated synthetic peptide between 201-228 amino acids from human T.
Dilution	WB~~1:1000~8000 E~~Use at an assay dependent concentration.
Format	Mouse monoclonal antibody supplied in crude ascites with 0.09% (W/V) sodium azide.
Storage	Maintain refrigerated at 2-8°C for up to 2 weeks. For long term storage store at -20°C in small aliquots to prevent freeze-thaw cycles.
Precautions	T Antibody (Ascites) is for research use only and not for use in diagnostic or therapeutic procedures.

## Protein Information

---

Name	TBXT ( <a href="#">HGNC:11515</a> )
Synonyms	T
Function	Involved in the transcriptional regulation of genes required for mesoderm formation and differentiation. Binds to a palindromic T site 5'-TTCACACCTAGGTGTGAA-3' DNA sequence and activates gene transcription

when bound to such a site.

**Cellular Location**

Nucleus

**Tissue Location**

Detected in testis, but not in other, normal tissues. Detected in lung tumors (at protein level)

## Background

---

The protein encoded by this gene is an embryonic nuclear transcription factor that binds to a specific DNA element, the palindromic T-site. It binds through a region in its N-terminus, called the T-box, and effects transcription of genes required for mesoderm formation and differentiation. The protein is localized to notochord-derived cells.

## References

---

Jambhekar, N.A., et al. Arch. Pathol. Lab. Med. 134(8):1181-1187(2010)

Docherty, S.J., et al. BMC Genet. 11, 61 (2010) :

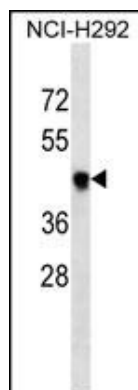
Yang, X.R., et al. Nat. Genet. 41(11):1176-1178(2009)

Oakley, G.J., et al. Mod. Pathol. 21(12):1461-1469(2008)

Bondue, A., et al. Cell Stem Cell 3(1):69-84(2008)

## Images

---



T Antibody (Cat. #AM1993a) western blot analysis in NCI-H292 cell line lysates (35µg/lane). This demonstrates the T antibody detected the T protein (arrow).

Please note: All products are 'FOR RESEARCH USE ONLY. NOT FOR USE IN DIAGNOSTIC OR THERAPEUTIC PROCEDURES'.