

T Antibody

Mouse Monoclonal Antibody (Mab)

Catalog # AM1993b

Product Information

Application	WB, E
Primary Accession	O15178
Other Accession	NP_003172.1
Reactivity	Human, Mouse
Host	Mouse
Clonality	Monoclonal
Isotype	IgM
Clone Names	394CT14.1.4
Calculated MW	47443
Antigen Region	262-291

Additional Information

Gene ID	6862
Other Names	Brachyury protein, Protein T, T
Target/Specificity	This T antibody is generated from mice immunized with a KLH conjugated synthetic peptide between 262-291 amino acids from human T.
Dilution	WB~~1:500~1000 E~~Use at an assay dependent concentration.
Format	Purified monoclonal antibody supplied in PBS with 0.09% (W/V) sodium azide. This antibody is prepared by Euglobin precipitation followed by dialysis against PBS.
Storage	Maintain refrigerated at 2-8°C for up to 2 weeks. For long term storage store at -20°C in small aliquots to prevent freeze-thaw cycles.
Precautions	T Antibody is for research use only and not for use in diagnostic or therapeutic procedures.

Protein Information

Name	TBXT (HGNC:11515)
Synonyms	T
Function	Involved in the transcriptional regulation of genes required for mesoderm formation and differentiation. Binds to a palindromic T site 5'-TTCACACCTAGGTGTGAA-3' DNA sequence and activates gene transcription

when bound to such a site.

Cellular Location

Nucleus

Tissue Location

Detected in testis, but not in other, normal tissues. Detected in lung tumors (at protein level)

Background

The protein encoded by this gene is an embryonic nuclear transcription factor that binds to a specific DNA element, the palindromic T-site. It binds through a region in its N-terminus, called the T-box, and effects transcription of genes required for mesoderm formation and differentiation. The protein is localized to notochord-derived cells.

References

Jambhekar, N.A., et al. Arch. Pathol. Lab. Med. 134(8):1181-1187(2010)

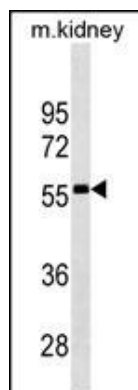
Docherty, S.J., et al. BMC Genet. 11, 61 (2010) :

Yang, X.R., et al. Nat. Genet. 41(11):1176-1178(2009)

Oakley, G.J., et al. Mod. Pathol. 21(12):1461-1469(2008)

Bondue, A., et al. Cell Stem Cell 3(1):69-84(2008)

Images



T Antibody (Cat. #AM1993b) western blot analysis in mouse kidney tissue lysates (35µg/lane). This demonstrates the T antibody detected the T protein (arrow).

Please note: All products are 'FOR RESEARCH USE ONLY. NOT FOR USE IN DIAGNOSTIC OR THERAPEUTIC PROCEDURES'.