

ITGAX/CD11c Antibody (N-term)(Ascites)

Mouse Monoclonal Antibody (Mab)

Catalog # AM2013a

Product Information

Application	WB, E
Primary Accession	P20702
Other Accession	NP_000878.2
Reactivity	Human
Host	Mouse
Clonality	Monoclonal
Isotype	IgG1
Clone Names	428CT12.2.6.4
Calculated MW	127829
Antigen Region	246-274

Additional Information

Gene ID	3687
Other Names	Integrin alpha-X, CD11 antigen-like family member C, Leu M5, Leukocyte adhesion glycoprotein p150, 95 alpha chain, Leukocyte adhesion receptor p150, CD11c, ITGAX, CD11C
Target/Specificity	This ITGAX/CD11c antibody is generated from mice immunized with a KLH conjugated synthetic peptide between 246-274 amino acids from the N-terminal region of human ITGAX/CD11c.
Dilution	WB~~1:500~2000 E~~Use at an assay dependent concentration.
Format	Mouse monoclonal antibody supplied in crude ascites with 0.09% (W/V) sodium azide.
Storage	Maintain refrigerated at 2-8°C for up to 2 weeks. For long term storage store at -20°C in small aliquots to prevent freeze-thaw cycles.
Precautions	ITGAX/CD11c Antibody (N-term)(Ascites) is for research use only and not for use in diagnostic or therapeutic procedures.

Protein Information

Name	ITGAX
Synonyms	CD11C
Function	Integrin alpha-X/beta-2 is a receptor for fibrinogen. It recognizes the

sequence G-P-R in fibrinogen. It mediates cell-cell interaction during inflammatory responses. It is especially important in monocyte adhesion and chemotaxis.

Cellular Location

Membrane; Single-pass type I membrane protein.

Tissue Location

Predominantly expressed in monocytes and granulocytes

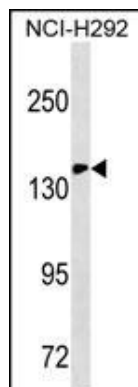
Background

This gene encodes the integrin alpha X chain protein. Integrins are heterodimeric integral membrane proteins composed of an alpha chain and a beta chain. This protein combines with the beta 2 chain (ITGB2) to form a leukocyte-specific integrin referred to as inactivated-C3b (iC3b) receptor 4 (CR4). The alpha X beta 2 complex seems to overlap the properties of the alpha M beta 2 integrin in the adherence of neutrophils and monocytes to stimulated endothelium cells, and in the phagocytosis of complement coated particles.

References

Van Brussel, I., et al. J. Immunol. Methods 362 (1-2), 168-175 (2010) :
Chen, X., et al. Proc. Natl. Acad. Sci. U.S.A. 107(33):14727-14732(2010)
Lindsay, R.W., et al. J. Immunol. 185(3):1513-1521(2010)
Kraus, T.S., et al. Am. J. Clin. Pathol. 134(2):271-277(2010)
Quist, S.R., et al. Acta Derm. Venereol. 90(4):429-430(2010)

Images



ITGAX/CD11c Antibody (N-term) (Cat. #AM2013a) western blot analysis in NCI-H292 cell line lysates (35µg/lane). This demonstrates the ITGAX/CD11c antibody detected the ITGAX/CD11c protein (arrow).

Please note: All products are 'FOR RESEARCH USE ONLY. NOT FOR USE IN DIAGNOSTIC OR THERAPEUTIC PROCEDURES'.