

# ITGAX/CD11c Antibody (N-term)

Mouse Monoclonal Antibody (Mab)

Catalog # AM2013b

## Product Information

---

<b>Application</b>	WB, E
<b>Primary Accession</b>	<a href="#">P20702</a>
<b>Other Accession</b>	<a href="#">NP_000878.2</a>
<b>Reactivity</b>	Human
<b>Host</b>	Mouse
<b>Clonality</b>	Monoclonal
<b>Isotype</b>	IgG1
<b>Clone Names</b>	428CT12.2.6.4
<b>Calculated MW</b>	127829
<b>Antigen Region</b>	246-274

## Additional Information

---

<b>Gene ID</b>	3687
<b>Other Names</b>	Integrin alpha-X, CD11 antigen-like family member C, Leu M5, Leukocyte adhesion glycoprotein p150, 95 alpha chain, Leukocyte adhesion receptor p150, CD11c, ITGAX, CD11C
<b>Target/Specificity</b>	This ITGAX/CD11c antibody is generated from mice immunized with a KLH conjugated synthetic peptide between 246-274 amino acids from the N-terminal region of human ITGAX/CD11c.
<b>Dilution</b>	WB~~1:500~1000 E~~Use at an assay dependent concentration.
<b>Format</b>	Purified monoclonal antibody supplied in PBS with 0.09% (W/V) sodium azide. This antibody is purified through a protein G column, followed by dialysis against PBS.
<b>Storage</b>	Maintain refrigerated at 2-8°C for up to 2 weeks. For long term storage store at -20°C in small aliquots to prevent freeze-thaw cycles.
<b>Precautions</b>	ITGAX/CD11c Antibody (N-term) is for research use only and not for use in diagnostic or therapeutic procedures.

## Protein Information

---

<b>Name</b>	ITGAX
<b>Synonyms</b>	CD11C

<b>Function</b>	Integrin alpha-X/beta-2 is a receptor for fibrinogen. It recognizes the sequence G-P-R in fibrinogen. It mediates cell-cell interaction during inflammatory responses. It is especially important in monocyte adhesion and chemotaxis.
<b>Cellular Location</b>	Membrane; Single-pass type I membrane protein.
<b>Tissue Location</b>	Predominantly expressed in monocytes and granulocytes

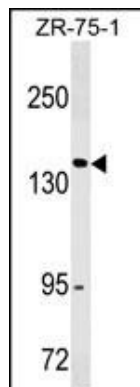
## Background

This gene encodes the integrin alpha X chain protein. Integrins are heterodimeric integral membrane proteins composed of an alpha chain and a beta chain. This protein combines with the beta 2 chain (ITGB2) to form a leukocyte-specific integrin referred to as inactivated-C3b (iC3b) receptor 4 (CR4). The alpha X beta 2 complex seems to overlap the properties of the alpha M beta 2 integrin in the adherence of neutrophils and monocytes to stimulated endothelium cells, and in the phagocytosis of complement coated particles.

## References

Van Brussel, I., et al. J. Immunol. Methods 362 (1-2), 168-175 (2010) :  
Chen, X., et al. Proc. Natl. Acad. Sci. U.S.A. 107(33):14727-14732(2010)  
Lindsay, R.W., et al. J. Immunol. 185(3):1513-1521(2010)  
Kraus, T.S., et al. Am. J. Clin. Pathol. 134(2):271-277(2010)  
Quist, S.R., et al. Acta Derm. Venereol. 90(4):429-430(2010)

## Images



ITGAX/CD11c Antibody (N-term) (Cat. #AM2013b) western blot analysis in ZR-75-1 cell line lysates (35µg/lane). This demonstrates the ITGAX/CD11c antibody detected the ITGAX/CD11c protein (arrow).

Please note: All products are 'FOR RESEARCH USE ONLY. NOT FOR USE IN DIAGNOSTIC OR THERAPEUTIC PROCEDURES'.