

TLE4 Antibody (Center)(Ascites)

Mouse Monoclonal Antibody (Mab)

Catalog # AM2017a

Product Information

Application	WB, E
Primary Accession	Q04727
Other Accession	Q07141 , Q62441 , NP_008936.2
Reactivity	Human
Predicted	Mouse, Rat
Host	Mouse
Clonality	Monoclonal
Isotype	IgM
Clone Names	384CT24.1.3.4
Calculated MW	83755
Antigen Region	262-290

Additional Information

Gene ID	7091
Other Names	Transducin-like enhancer protein 4, Grg-4, Groucho-related protein 4, TLE4, GRG4, KIAA1261
Target/Specificity	This TLE4 antibody is generated from mice immunized with a KLH conjugated synthetic peptide between 262-290 amino acids from the Central region of human TLE4.
Dilution	WB~~1:100~3200 E~~Use at an assay dependent concentration.
Format	Mouse monoclonal antibody supplied in crude ascites with 0.09% (W/V) sodium azide.
Storage	Maintain refrigerated at 2-8°C for up to 2 weeks. For long term storage store at -20°C in small aliquots to prevent freeze-thaw cycles.
Precautions	TLE4 Antibody (Center)(Ascites) is for research use only and not for use in diagnostic or therapeutic procedures.

Protein Information

Name	TLE4
Synonyms	GRG4, KIAA1261
Function	Transcriptional corepressor that binds to a number of transcription factors.

Inhibits the transcriptional activation mediated by PAX5, and by CTNNB1 and TCF family members in Wnt signaling. The effects of full-length TLE family members may be modulated by association with dominant-negative AES. Essential for the transcriptional repressor activity of SIX3 during retina and lens development and for SIX3 transcriptional auto-repression (By similarity). Involved in transcriptional repression of GNRHR and enhances MSX1-mediated transcriptional repression of CGA/alpha-GSU (By similarity).

Cellular Location

Nucleus.

Tissue Location

In all tissues examined, mostly in brain, and muscle

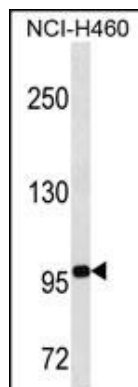
Background

Transcriptional corepressor that binds to a number of transcription factors. Inhibits the transcriptional activation mediated by PAX5, and by CTNNB1 and TCF family members in Wnt signaling. The effects of full-length TLE family members may be modulated by association with dominant-negative AES (By similarity).

References

Liu, Y., et al. PLoS Genet. 5 (11), E1000707 (2009) :
Hancock, D.B., et al. PLoS Genet. 5 (8), E1000623 (2009) :
Stolk, L., et al. Nat. Genet. (2009) In press :
Dayyani, F., et al. Blood 111(8):4338-4347(2008)
Heimbucher, T., et al. Mol. Cell. Biol. 27(1):340-351(2007)

Images



TLE4 Antibody (Center) (Cat. #AM2017a) western blot analysis in NCI-H460 cell line lysates (35µg/lane). This demonstrates the TLE4 antibody detected the TLE4 protein (arrow).

Please note: All products are 'FOR RESEARCH USE ONLY. NOT FOR USE IN DIAGNOSTIC OR THERAPEUTIC PROCEDURES'.