

# TLE4 Antibody (Center)

Mouse Monoclonal Antibody (Mab)

Catalog # AM2017b

## Product Information

---

<b>Application</b>	WB, E
<b>Primary Accession</b>	<a href="#">Q04727</a>
<b>Other Accession</b>	<a href="#">Q07141</a> , <a href="#">Q62441</a> , <a href="#">NP_008936.2</a>
<b>Reactivity</b>	Human
<b>Predicted</b>	Mouse, Rat
<b>Host</b>	Mouse
<b>Clonality</b>	Monoclonal
<b>Isotype</b>	IgM
<b>Clone Names</b>	384CT24.1.3.4
<b>Calculated MW</b>	83755
<b>Antigen Region</b>	262-290

## Additional Information

---

<b>Gene ID</b>	7091
<b>Other Names</b>	Transducin-like enhancer protein 4, Grg-4, Groucho-related protein 4, TLE4, GRG4, KIAA1261
<b>Target/Specificity</b>	This TLE4 antibody is generated from mice immunized with a KLH conjugated synthetic peptide between 262-290 amino acids from the Central region of human TLE4.
<b>Dilution</b>	WB~~1:500~1000 E~~Use at an assay dependent concentration.
<b>Format</b>	Purified polyclonal antibody supplied in PBS with 0.05% (V/V) Proclin 300. This antibody is prepared by Saturated Ammonium Sulfate (SAS) precipitation followed by dialysis against PBS.
<b>Storage</b>	Maintain refrigerated at 2-8°C for up to 2 weeks. For long term storage store at -20°C in small aliquots to prevent freeze-thaw cycles.
<b>Precautions</b>	TLE4 Antibody (Center) is for research use only and not for use in diagnostic or therapeutic procedures.

## Protein Information

---

<b>Name</b>	TLE4
<b>Synonyms</b>	GRG4, KIAA1261

**Function** Transcriptional corepressor that binds to a number of transcription factors. Inhibits the transcriptional activation mediated by PAX5, and by CTNNB1 and TCF family members in Wnt signaling. The effects of full-length TLE family members may be modulated by association with dominant-negative AES. Essential for the transcriptional repressor activity of SIX3 during retina and lens development and for SIX3 transcriptional auto-repression (By similarity). Involved in transcriptional repression of GNRHR and enhances MSX1-mediated transcriptional repression of CGA/alpha-GSU (By similarity).

**Cellular Location** Nucleus.

**Tissue Location** In all tissues examined, mostly in brain, and muscle

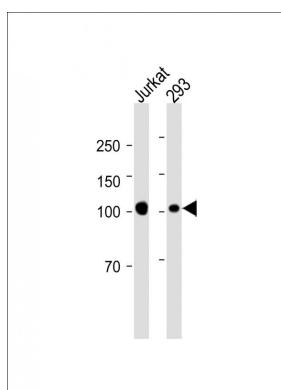
## Background

Transcriptional corepressor that binds to a number of transcription factors. Inhibits the transcriptional activation mediated by PAX5, and by CTNNB1 and TCF family members in Wnt signaling. The effects of full-length TLE family members may be modulated by association with dominant-negative AES (By similarity).

## References

Liu, Y., et al. PLoS Genet. 5 (11), E1000707 (2009) :  
Hancock, D.B., et al. PLoS Genet. 5 (8), E1000623 (2009) :  
Stolk, L., et al. Nat. Genet. (2009) In press :  
Dayyani, F., et al. Blood 111(8):4338-4347(2008)  
Heimbucher, T., et al. Mol. Cell. Biol. 27(1):340-351(2007)

## Images



All lanes: Anti-TLE4 Antibody (Center) at 1:1000 dilution  
Lane 1: Jurkat whole cell lysate Lane 2: 293 whole cell lysate  
Lysates/proteins at 20 µg per lane. Secondary: Goat Anti-Mouse IgG, (H+L), Peroxidase conjugated (ASP1613) at 1/8000 dilution. Observed band size: 100 KDa  
Blocking/Dilution buffer: 5% NFDM/TBST.

Please note: All products are 'FOR RESEARCH USE ONLY. NOT FOR USE IN DIAGNOSTIC OR THERAPEUTIC PROCEDURES'.