

# CALCA/CT Antibody(Ascites)

Mouse Monoclonal Antibody (Mab)

Catalog # AM2021a

## Product Information

---

<b>Application</b>	WB, E
<b>Primary Accession</b>	<a href="#">P01258</a>
<b>Other Accession</b>	<a href="#">NP_001029124.1</a> , <a href="#">NP_001732.1</a>
<b>Reactivity</b>	Human
<b>Host</b>	Mouse
<b>Clonality</b>	Monoclonal
<b>Isotype</b>	IgM
<b>Clone Names</b>	406CT21.4.3
<b>Calculated MW</b>	15467
<b>Antigen Region</b>	104-132

## Additional Information

---

<b>Gene ID</b>	796
<b>Other Names</b>	Calcitonin, Calcitonin, Katalcalcin, Calcitonin carboxyl-terminal peptide, CCP, PDN-21, CALCA, CALC1
<b>Target/Specificity</b>	This CALCA/CT antibody is generated from mice immunized with a KLH conjugated synthetic peptide between 104-132 amino acids from human CALCA/CT.
<b>Dilution</b>	WB~~1:1000~8000 E~~Use at an assay dependent concentration.
<b>Format</b>	Mouse monoclonal antibody supplied in crude ascites with 0.09% (W/V) sodium azide.
<b>Storage</b>	Maintain refrigerated at 2-8°C for up to 2 weeks. For long term storage store at -20°C in small aliquots to prevent freeze-thaw cycles.
<b>Precautions</b>	CALCA/CT Antibody(Ascites) is for research use only and not for use in diagnostic or therapeutic procedures.

## Protein Information

---

<b>Name</b>	CALCA ( <a href="#">HGNC:1437</a> )
<b>Synonyms</b>	CALC1
<b>Function</b>	[Calcitonin]: Calcitonin is a peptide hormone that causes a rapid but short-lived drop in the level of calcium and phosphate in blood by promoting

the incorporation of those ions in the bones. Calcitonin function is mediated by the calcitonin receptor/CALCR and the CALCR-RAMP2 (AMYR2) receptor complex (PubMed:[35324283](#)).

#### Cellular Location

Secreted.

## Background

---

This gene encodes the peptide hormones calcitonin, calcitonin gene-related peptide and katacalcin by tissue-specific alternative RNA splicing of the gene transcripts and cleavage of inactive precursor proteins. Calcitonin is involved in calcium regulation and acts to regulate phosphorus metabolism. Calcitonin gene-related peptide functions as a vasodilator while katacalcin is a calcium-lowering peptide. Multiple transcript variants encoding different isoforms have been found for this gene.

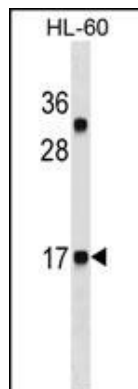
## References

---

Giroux, S., et al. Bone 47(5):975-981(2010)  
Bailey, S.D., et al. Diabetes Care 33(10):2250-2253(2010)  
Lee, J.Y., et al. Korean J Lab Med 30(4):406-413(2010)  
Giovanella, L., et al. Clin. Chem. Lab. Med. 48(8):1163-1165(2010)  
Hatzistilianou, M. ScientificWorldJournal 10, 1941-1946 (2010) :

## Images

---



CALCA/CT Antibody (Cat. #AM2021a) western blot analysis in HL-60 cell line lysates (35µg/lane). This demonstrates the CALCA/CT antibody detected the CALCA/CT protein (arrow).

Please note: All products are 'FOR RESEARCH USE ONLY. NOT FOR USE IN DIAGNOSTIC OR THERAPEUTIC PROCEDURES'.