

SWAP70 Antibody

Mouse Monoclonal Antibody (Mab)

Catalog # AM2029b

Product Information

Application	WB, E
Primary Accession	Q9UH65
Other Accession	NP_055870.2
Reactivity	Human
Host	Mouse
Clonality	Monoclonal
Isotype	IgG1
Clone Names	434CT16.5.5
Calculated MW	68998

Additional Information

Gene ID	23075
Other Names	Switch-associated protein 70, SWAP-70, SWAP70, KIAA0640
Target/Specificity	Purified His-tagged SWAP70 protein(Fragment) was used to produced this monoclonal antibody.
Dilution	WB~~1:100~1000 E~~Use at an assay dependent concentration.
Format	Purified monoclonal antibody supplied in PBS with 0.09% (W/V) sodium azide. This antibody is purified through a protein G column, followed by dialysis against PBS.
Storage	Maintain refrigerated at 2-8°C for up to 2 weeks. For long term storage store at -20°C in small aliquots to prevent freeze-thaw cycles.
Precautions	SWAP70 Antibody is for research use only and not for use in diagnostic or therapeutic procedures.

Protein Information

Name	SWAP70
Synonyms	KIAA0640
Function	Phosphatidylinositol 3,4,5-trisphosphate-dependent guanine nucleotide exchange factor (GEF) which, independently of RAS, transduces signals from tyrosine kinase receptors to RAC. It also mediates signaling of membrane ruffling. Regulates the actin cytoskeleton as an effector or adapter protein in

response to agonist stimulated phosphatidylinositol (3,4)-bisphosphate production and cell protrusion (By similarity).

Cellular Location

Cytoplasm. Cell membrane. Nucleus. Cell projection, lamellipodium. Cytoplasm, cytoskeleton. Note=In resting B-cells it is localized mainly in the cytoplasm and upon cell activation it is recruited to the plasma membrane and then translocates to the nucleus (PubMed:10681448) In activated, class-switching B-cells it is associated with membrane IgG but not IgM (PubMed:10681448). Localized to loose actin filament arrays located behind actively extending lamellipodia (PubMed:12925760).

Tissue Location

Expressed only in mature B-cells including those associated with mucosa-associated tissue and bronchus-associated tissue (PubMed:10681448). Widely expressed. Abundant in spleen, and fairly abundant in kidney, lung and liver. Also found in monocytes and macrophages (PubMed:12925760).

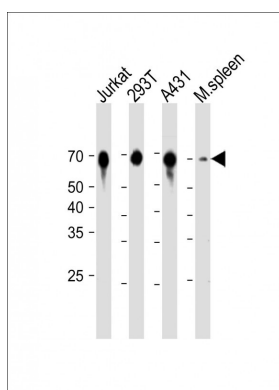
Background

Phosphatidylinositol 3,4,5-trisphosphate-dependent guanine nucleotide exchange factor (GEF) which, independently of RAS, transduces signals from tyrosine kinase receptors to RAC. It also mediates signaling of membrane ruffling. Regulates the actin cytoskeleton as an effector or adapter protein in response to agonist stimulated phosphatidylinositol (3,4)-bisphosphate production and cell protrusion (By similarity).

References

Liu, J., et al. J. Histochem. Cytochem. 55(7):701-708(2007)
Ihara, S., et al. J. Cell. Sci. 119 (PT 3), 500-507 (2006) :
Kimbara, N., et al. Microbiol. Immunol. 50(3):235-242(2006)
Hilpela, P., et al. Mol. Biol. Cell 14(8):3242-3253(2003)
Rapalus, L., et al. Clin. Immunol. 101(3):270-275(2001)

Images



All lanes: Anti-SWAP70 Antibody at 1:1000 dilution Lane 1: Jurkat whole cell lysate Lane 2: 293T whole cell lysate Lane 3: A431 whole cell lysate Lane 4: Mouse spleen lysate Lysates/proteins at 20 µg per lane. Secondary: Goat Anti-Mouse IgG, (H+L), Peroxidase conjugated (ASP1615) at 1/15000 dilution. Observed band size: 69 KDa Blocking/Dilution buffer: 5% NFDM/TBST.

Please note: All products are 'FOR RESEARCH USE ONLY. NOT FOR USE IN DIAGNOSTIC OR THERAPEUTIC PROCEDURES'.