

CRP Antibody (Ascites)

Mouse Monoclonal Antibody (Mab)

Catalog # AM2041a

Product Information

Application	WB, E
Primary Accession	P02741
Other Accession	NP_000558.2
Reactivity	Human, Mouse
Host	Mouse
Clonality	Monoclonal
Isotype	IgG3
Clone Names	506CT15.5.3
Calculated MW	25039
Antigen Region	194-221

Additional Information

Gene ID	1401
Other Names	C-reactive protein, C-reactive protein(1-205), CRP, PTX1
Target/Specificity	This CRP antibody is generated from mice immunized with a KLH conjugated synthetic peptide between 194-221 amino acids from human CRP.
Dilution	WB~~1:500~8000 E~~Use at an assay dependent concentration.
Format	Mouse monoclonal antibody supplied in crude ascites with 0.09% (W/V) sodium azide.
Storage	Maintain refrigerated at 2-8°C for up to 2 weeks. For long term storage store at -20°C in small aliquots to prevent freeze-thaw cycles.
Precautions	CRP Antibody (Ascites) is for research use only and not for use in diagnostic or therapeutic procedures.

Protein Information

Name	CRP
Synonyms	PTX1
Function	Displays several functions associated with host defense: it promotes agglutination, bacterial capsular swelling, phagocytosis and complement fixation through its calcium-dependent binding to phosphorylcholine. Can interact with DNA and histones and may scavenge nuclear material released

from damaged circulating cells.

Cellular Location Secreted.

Tissue Location Found in plasma.

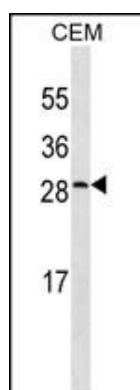
Background

The protein encoded by this gene belongs to the pentaxin family. It is involved in several host defense related functions based on its ability to recognize foreign pathogens and damaged cells of the host and to initiate their elimination by interacting with humoral and cellular effector systems in the blood. Consequently, the level of this protein in plasma increases greatly during acute phase response to tissue injury, infection, or other inflammatory stimuli.

References

Brindle, E., et al. J. Immunol. Methods 362 (1-2), 112-120 (2010) :
Lim, L.S., et al. Invest. Ophthalmol. Vis. Sci. 51(9):4458-4463(2010)
Marott, S.C., et al. J. Am. Coll. Cardiol. 56(10):789-795(2010)
Szczesny, G., et al. Arch Orthop Trauma Surg (2010) In press :
Kuhlenbaeumer, G., et al. Cerebrovasc. Dis. 30(5):476-482(2010)

Images



CRP Antibody (Cat. #AM2041a) western blot analysis in CEM cell line lysates (35µg/lane). This demonstrates the CRP antibody detected the CRP protein (arrow).

Please note: All products are 'FOR RESEARCH USE ONLY. NOT FOR USE IN DIAGNOSTIC OR THERAPEUTIC PROCEDURES'.