

# CRP Antibody

Mouse Monoclonal Antibody (Mab)

Catalog # AM2041b

## Product Information

---

<b>Application</b>	WB, E
<b>Primary Accession</b>	<a href="#">P02741</a>
<b>Other Accession</b>	<a href="#">NP_000558.2</a>
<b>Reactivity</b>	Human
<b>Host</b>	Mouse
<b>Clonality</b>	Monoclonal
<b>Isotype</b>	IgG3
<b>Clone Names</b>	506CT15.5.3
<b>Calculated MW</b>	25039
<b>Antigen Region</b>	8-35

## Additional Information

---

<b>Gene ID</b>	1401
<b>Other Names</b>	C-reactive protein, C-reactive protein(1-205), CRP, PTX1
<b>Target/Specificity</b>	This CRP antibody is generated from mice immunized with a KLH conjugated synthetic peptide between 8-35 amino acids from human CRP.
<b>Dilution</b>	WB~~1:500~1000 E~~Use at an assay dependent concentration.
<b>Format</b>	Purified monoclonal antibody supplied in PBS with 0.09% (W/V) sodium azide. This antibody is prepared by Euglobin precipitation followed by dialysis against PBS.
<b>Storage</b>	Maintain refrigerated at 2-8°C for up to 2 weeks. For long term storage store at -20°C in small aliquots to prevent freeze-thaw cycles.
<b>Precautions</b>	CRP Antibody is for research use only and not for use in diagnostic or therapeutic procedures.

## Protein Information

---

<b>Name</b>	CRP
<b>Synonyms</b>	PTX1
<b>Function</b>	Displays several functions associated with host defense: it promotes agglutination, bacterial capsular swelling, phagocytosis and complement fixation through its calcium-dependent binding to phosphorylcholine. Can

interact with DNA and histones and may scavenge nuclear material released from damaged circulating cells.

**Cellular Location** Secreted.

**Tissue Location** Found in plasma.

## Background

---

The protein encoded by this gene belongs to the pentaxin family. It is involved in several host defense related functions based on its ability to recognize foreign pathogens and damaged cells of the host and to initiate their elimination by interacting with humoral and cellular effector systems in the blood. Consequently, the level of this protein in plasma increases greatly during acute phase response to tissue injury, infection, or other inflammatory stimuli.

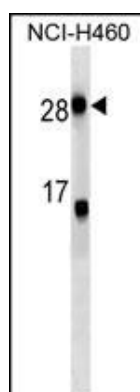
## References

---

Brindle, E., et al. J. Immunol. Methods 362 (1-2), 112-120 (2010) :  
Lim, L.S., et al. Invest. Ophthalmol. Vis. Sci. 51(9):4458-4463(2010)  
Marott, S.C., et al. J. Am. Coll. Cardiol. 56(10):789-795(2010)  
Szczesny, G., et al. Arch Orthop Trauma Surg (2010) In press :  
Kuhlenbaeumer, G., et al. Cerebrovasc. Dis. 30(5):476-482(2010)

## Images

---



CRP Antibody (Cat. #AM2041b) western blot analysis in NCI-H460 cell line lysates (35µg/lane). This demonstrates the CRP antibody detected the CRP protein (arrow).

Please note: All products are 'FOR RESEARCH USE ONLY. NOT FOR USE IN DIAGNOSTIC OR THERAPEUTIC PROCEDURES'.