

SERPINC1 Antibody (Ascites)

Mouse Monoclonal Antibody (Mab)

Catalog # AM2053a

Product Information

Application	WB, E
Primary Accession	P01008
Other Accession	NP_000479.1
Reactivity	Human, Rat
Host	Mouse
Clonality	Monoclonal
Isotype	IgG1
Clone Names	435CT4.7.4
Calculated MW	52602
Antigen Region	50-79

Additional Information

Gene ID	462
Other Names	Antithrombin-III, ATIII, Serpin C1, SERPINC1, AT3
Target/Specificity	This SERPINC1 antibody is generated from mice immunized with a KLH conjugated synthetic peptide between 50-79 amino acids from human SERPINC1.
Dilution	WB~~1:100~1600 E~~Use at an assay dependent concentration.
Format	Mouse monoclonal antibody supplied in crude ascites with 0.09% (W/V) sodium azide.
Storage	Maintain refrigerated at 2-8°C for up to 2 weeks. For long term storage store at -20°C in small aliquots to prevent freeze-thaw cycles.
Precautions	SERPINC1 Antibody (Ascites) is for research use only and not for use in diagnostic or therapeutic procedures.

Protein Information

Name	SERPINC1
Synonyms	AT3
Function	Most important serine protease inhibitor in plasma that regulates the blood coagulation cascade (PubMed: 15140129 , PubMed: 15853774). AT-III inhibits thrombin, matriptase-3/TMPRSS7, as well as factors IXa, Xa and XIa

(PubMed:[15140129](#)). Its inhibitory activity is greatly enhanced in the presence of heparin.

Cellular Location Secreted, extracellular space.

Tissue Location Found in plasma.

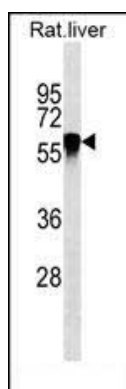
Background

The protein encoded by this gene is a plasma protease inhibitor and a member of the serpin superfamily. This protein inhibits thrombin as well as other activated serine proteases of the coagulation system, and it regulates the blood coagulation cascade. The protein includes two functional domains: the heparin binding-domain at the N-terminus of the mature protein, and the reactive site domain at the C-terminus. The inhibitory activity is enhanced by the presence of heparin. More than 120 mutations have been identified for this gene, many of which are known to cause antithrombin-III deficiency.

References

Romero, R., et al. Am. J. Obstet. Gynecol. 203 (4), 361 (2010) :
Bailey, S.D., et al. Diabetes Care 33(10):2250-2253(2010)
Zhang, G.S., et al. Blood Coagul. Fibrinolysis 21(6):588-591(2010)
Bunkenborg, J., et al. Proteomics 4(2):454-465(2004)
Picard, V., et al. Biochemistry 34(26):8433-8440(1995)

Images



SERPINC1 Antibody (Cat. #AM2053a) western blot analysis in rat liver tissue lysates (35µg/lane). This demonstrates the SERPINC1 antibody detected the SERPINC1 protein (arrow).

Please note: All products are 'FOR RESEARCH USE ONLY. NOT FOR USE IN DIAGNOSTIC OR THERAPEUTIC PROCEDURES'.