

# SERPINC1 Antibody

Mouse Monoclonal Antibody (Mab)

Catalog # AM2053b

## Product Information

---

Application	WB, E
Primary Accession	<a href="#">P01008</a>
Other Accession	<a href="#">NP_000479.1</a>
Reactivity	Human, Rat
Host	Mouse
Clonality	Monoclonal
Isotype	IgG1
Clone Names	435CT4.7.4
Calculated MW	52602
Antigen Region	364-393

## Additional Information

---

Gene ID	462
Other Names	Antithrombin-III, ATIII, Serpin C1, SERPINC1, AT3
Target/Specificity	This SERPINC1 antibody is generated from mice immunized with a KLH conjugated synthetic peptide between 364-393 amino acids from human SERPINC1.
Dilution	WB~~1:500~1000 E~~Use at an assay dependent concentration.
Format	Purified polyclonal antibody supplied in PBS with 0.09% (W/V) sodium azide. This antibody is prepared by Saturated Ammonium Sulfate (SAS) precipitation followed by dialysis against PBS.
Storage	Maintain refrigerated at 2-8°C for up to 2 weeks. For long term storage store at -20°C in small aliquots to prevent freeze-thaw cycles.
Precautions	SERPINC1 Antibody is for research use only and not for use in diagnostic or therapeutic procedures.

## Protein Information

---

Name	SERPINC1
Synonyms	AT3
Function	Most important serine protease inhibitor in plasma that regulates the blood coagulation cascade (PubMed: <a href="#">15140129</a> , PubMed: <a href="#">15853774</a> ). AT-III inhibits

thrombin, matrilysin-3/TMPRSS7, as well as factors IXa, Xa and XIa (PubMed:[15140129](#)). Its inhibitory activity is greatly enhanced in the presence of heparin.

**Cellular Location** Secreted, extracellular space.

**Tissue Location** Found in plasma.

## Background

---

The protein encoded by this gene is a plasma protease inhibitor and a member of the serpin superfamily. This protein inhibits thrombin as well as other activated serine proteases of the coagulation system, and it regulates the blood coagulation cascade. The protein includes two functional domains: the heparin binding-domain at the N-terminus of the mature protein, and the reactive site domain at the C-terminus. The inhibitory activity is enhanced by the presence of heparin. More than 120 mutations have been identified for this gene, many of which are known to cause antithrombin-III deficiency.

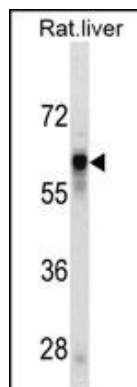
## References

---

Romero, R., et al. Am. J. Obstet. Gynecol. 203 (4), 361 (2010) :  
Bailey, S.D., et al. Diabetes Care 33(10):2250-2253(2010)  
Zhang, G.S., et al. Blood Coagul. Fibrinolysis 21(6):588-591(2010)  
Bunkenborg, J., et al. Proteomics 4(2):454-465(2004)  
Picard, V., et al. Biochemistry 34(26):8433-8440(1995)

## Images

---



SERPINC1 Antibody (Cat. #AM2053b) western blot analysis in rat liver tissue lysates (35µg/lane). This demonstrates the SERPINC1 antibody detected the SERPINC1 protein (arrow).

Please note: All products are 'FOR RESEARCH USE ONLY. NOT FOR USE IN DIAGNOSTIC OR THERAPEUTIC PROCEDURES'.