

EPO Antibody (Ascites)

Mouse Monoclonal Antibody (Mab)

Catalog # AM2081a

Product Information

Application	WB, E
Primary Accession	P01588
Other Accession	NP_000790.2
Reactivity	Human
Host	Mouse
Clonality	Monoclonal
Isotype	IgM
Clone Names	511CT20.2.4
Calculated MW	21307

Additional Information

Gene ID	2056
Other Names	Erythropoietin, Epoetin, EPO
Target/Specificity	Purified His-tagged EPO protein(Fragment) was used to produced this monoclonal antibody.
Dilution	WB~~1:1000~16000 E~~Use at an assay dependent concentration.
Format	Mouse monoclonal antibody supplied in crude ascites with 0.09% (W/V) sodium azide.
Storage	Maintain refrigerated at 2-8°C for up to 2 weeks. For long term storage store at -20°C in small aliquots to prevent freeze-thaw cycles.
Precautions	EPO Antibody (Ascites) is for research use only and not for use in diagnostic or therapeutic procedures.

Protein Information

Name	EPO
Function	Hormone involved in the regulation of erythrocyte proliferation and differentiation and the maintenance of a physiological level of circulating erythrocyte mass (PubMed: 28283061). Binds to EPOR leading to EPOR dimerization and JAK2 activation thereby activating specific downstream effectors, including STAT1 and STAT3 (PubMed: 9774108).
Cellular Location	Secreted.

Tissue Location

Produced by kidney or liver of adult mammals and by liver of fetal or neonatal mammals.

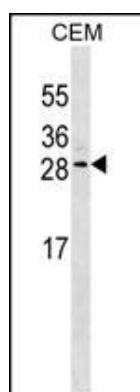
Background

This gene is a member of the EPO/TPO family and encodes a secreted, glycosylated cytokine composed of four alpha helical bundles. The protein is found in the plasma and regulates red cell production by promoting erythroid differentiation and initiating hemoglobin synthesis. This protein also has neuroprotective activity against a variety of potential brain injuries and antiapoptotic functions in several tissue types. [provided by RefSeq].

References

Bailey, S.D., et al. Diabetes Care 33(10):2250-2253(2010)
Kristensen, P.L., et al. Eur. J. Endocrinol. 163(3):391-398(2010)
Kim, M.H., et al. Mol. Biol. (Mosk.) 44(4):656-663(2010)
Carraway, M.S., et al. Circ. Res. 106(11):1722-1730(2010)
Shi, Z., et al. Mol. Cancer Res. 8(4):615-626(2010)

Images



EPO Antibody (Cat. #AM2081a) western blot analysis in CEM cell line lysates (35µg/lane). This demonstrates the EPO antibody detected the EPO protein (arrow).

Please note: All products are 'FOR RESEARCH USE ONLY. NOT FOR USE IN DIAGNOSTIC OR THERAPEUTIC PROCEDURES'.