

ARSA Antibody (C-term)

Mouse Monoclonal Antibody (Mab)

Catalog # AM2083b

Product Information

| | |
|--------------------------|-----------------------------|
| Application | WB, E |
| Primary Accession | P15289 |
| Other Accession | NP_000478.2 |
| Reactivity | Human |
| Host | Mouse |
| Clonality | Monoclonal |
| Isotype | IgG2a |
| Clone Names | 498CT24.1.2 |
| Calculated MW | 53588 |
| Antigen Region | 408-439 |

Additional Information

| | |
|---------------------------|---|
| Gene ID | 410 |
| Other Names | Arylsulfatase A, ASA, Cerebroside-sulfatase, Arylsulfatase A component B, Arylsulfatase A component C, ARSA |
| Target/Specificity | This ARSA antibody is generated from mice immunized with a KLH conjugated synthetic peptide between 408-439 amino acids from the C-terminal region of human ARSA. |
| Dilution | WB~~1:500~1000 E~~Use at an assay dependent concentration. |
| Format | Purified monoclonal antibody supplied in PBS with 0.09% (W/V) sodium azide. This antibody is purified through a protein G column, followed by dialysis against PBS. |
| Storage | Maintain refrigerated at 2-8°C for up to 2 weeks. For long term storage store at -20°C in small aliquots to prevent freeze-thaw cycles. |
| Precautions | ARSA Antibody (C-term) is for research use only and not for use in diagnostic or therapeutic procedures. |

Protein Information

| | |
|--------------------------|---------------------------------|
| Name | ARSA |
| Function | Hydrolyzes cerebroside sulfate. |
| Cellular Location | Endoplasmic reticulum. Lysosome |

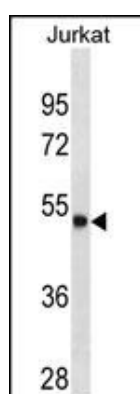
Background

The protein encoded by this gene hydrolyzes cerebroside sulfate to cerebroside and sulfate. Defects in this gene lead to metachromatic leucodystrophy (MLD), a progressive demyelination disease which results in a variety of neurological symptoms and ultimately death. Alternatively spliced transcript variants have been described for this gene.

References

Cesani, M., et al. Hum. Mutat. 30 (10), E936-E945 (2009) : Matzner, U., et al. J. Biol. Chem. 284(14):9372-9381(2009) Bisgaard, A.M., et al. Clin. Genet. 75(2):175-179(2009) Lugowska, A., et al. Clin. Genet. 75(1):57-64(2009) Oshikawa, M., et al. Mol. Vis. 15, 482-494 (2009) :

Images



ARSA Antibody (C-term) (Cat. #AM2083b) western blot analysis in Jurkat cell line lysates (35µg/lane). This demonstrates the ARSA antibody detected the ARSA protein (arrow).

Please note: All products are 'FOR RESEARCH USE ONLY. NOT FOR USE IN DIAGNOSTIC OR THERAPEUTIC PROCEDURES'.