

HKLK3 Antibody (C234)

Mouse Monoclonal Antibody (Mab)
Catalog # AM2088b

Product Information

Application	WB, E
Primary Accession	P07288
Other Accession	NP_001639
Reactivity	Human
Host	Mouse
Clonality	Monoclonal
Isotype	IgM
Clone Names	551CT16.3.5
Antigen Region	220-250

Additional Information

Other Names	Prostate-specific antigen, PSA, Gamma-seminoprotein, Semin, Kallikrein-3, P-30 antigen, Semenogelase, KLK3, APS
Target/Specificity	This HKLK3 antibody is generated from mice immunized with a KLH conjugated synthetic peptide between 220-250 amino acids from human HKLK3.
Dilution	WB~~1:500~1:1000 E~~Use at an assay dependent concentration.
Format	Purified polyclonal antibody supplied in PBS with 0.05% (V/V) Proclin 300. This antibody is prepared by Saturated Ammonium Sulfate (SAS) precipitation followed by dialysis against PBS.
Storage	Maintain refrigerated at 2-8°C for up to 2 weeks. For long term storage store at -20°C in small aliquots to prevent freeze-thaw cycles.
Precautions	HKLK3 Antibody (C234) is for research use only and not for use in diagnostic or therapeutic procedures.

Protein Information

Background

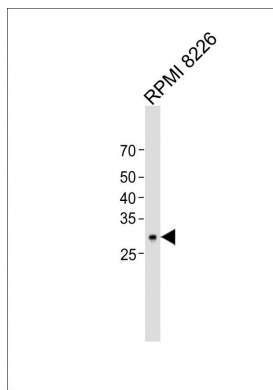
Kallikreins are a subgroup of serine proteases having diverse physiological functions. Growing evidence suggests that many kallikreins are implicated in carcinogenesis and some have potential as novel cancer and other disease biomarkers. This gene is one of the fifteen kallikrein subfamily members located in a cluster on chromosome 19. Its protein product is a protease present in seminal plasma. It is thought to function normally in the liquefaction of seminal coagulum, presumably by hydrolysis of the high molecular mass

seminal vesicle protein. Serum level of this protein, called PSA in the clinical setting, is useful in the diagnosis and monitoring of prostatic carcinoma. Alternate splicing of this gene generates several transcript variants encoding different isoforms.

References

- Kim, S.T., et al. Prostate 70(16):1729-1738(2010)
Kuasne, H., et al. Cancer Invest. 28(9):917-924(2010)
Bailey, S.D., et al. Diabetes Care 33(10):2250-2253(2010)
Sarrats, A., et al. OMICS 14(4):465-474(2010)
Gallagher, D.J., et al. Clin. Cancer Res. 16(10):2819-2832(2010)

Images



All lanes: Anti-hKLK3-C234 Antibody (C-term) at 1:1000 dilution + RPMI 8226 whole cell lysate Lysates/proteins at 20 µg per lane. Secondary: Goat Anti-Mouse IgG, (H+L), Peroxidase conjugated (ASP1613) at 1/8000 dilution. Observed band size: 29 KDa Blocking/Dilution buffer: 5% NFDm/TBST.

Please note: All products are 'FOR RESEARCH USE ONLY. NOT FOR USE IN DIAGNOSTIC OR THERAPEUTIC PROCEDURES'.