

ESR2 Antibody (Center) (Ascites)

Mouse Monoclonal Antibody (Mab)

Catalog # AM2112a

Product Information

Application	WB, E
Primary Accession	Q92731
Other Accession	Q62986 , Q9XSW2 , Q9PTU5 , Q9XSB5 , NP_001428
Reactivity	Human
Predicted	Bovine, Chicken, Pig, Rat
Host	Mouse
Clonality	Monoclonal
Isotype	IgG1
Clone Names	555CT18.5.5
Antigen Region	369-397

Additional Information

Other Names	Estrogen receptor beta, ER-beta, Nuclear receptor subfamily 3 group A member 2, ESR2, ESTRB, NR3A2
Target/Specificity	This ESR2 antibody is generated from mice immunized with a KLH conjugated synthetic peptide between 369-397 amino acids from the Central region of human ESR2.
Dilution	WB~~1:100~4000 E~~Use at an assay dependent concentration.
Format	Mouse monoclonal antibody supplied in crude ascites with 0.09% (W/V) sodium azide.
Storage	Maintain refrigerated at 2-8°C for up to 2 weeks. For long term storage store at -20°C in small aliquots to prevent freeze-thaw cycles.
Precautions	ESR2 Antibody (Center) (Ascites) is for research use only and not for use in diagnostic or therapeutic procedures.

Protein Information

Background

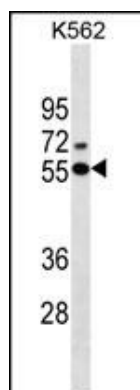
This gene encodes a member of the family of estrogen receptors and superfamily of nuclear receptor transcription factors. The gene product contains an N-terminal DNA binding domain and C-terminal ligand binding domain and is localized to the nucleus, cytoplasm, and mitochondria. Upon binding to 17beta-estradiol or related ligands, the encoded protein forms homo- or hetero-dimers that interact with specific DNA sequences to activate transcription. Some isoforms dominantly inhibit the activity of other

estrogen receptor family members. Several alternatively spliced transcript variants of this gene have been described, but the full-length nature of some of these variants has not been fully characterized.

References

Fang, Y.J., et al. *Tumour Biol.* 31(6):651-658(2010)
Hayes, D.F., et al. *Clin. Pharmacol. Ther.* 88(5):626-629(2010)
Romero, R., et al. *Am. J. Obstet. Gynecol.* 203 (4), 361 (2010) :
Wurster, M., et al. *Oncol. Rep.* 24(3):653-659(2010)
Paulus, J.K., et al. *Lung Cancer* (2010) In press :

Images



ESR2 Antibody (Center)(Ascites)(Cat. #AM2112a) western blot analysis in K562 cell line lysates (35µg/lane). This demonstrates the ESR2 antibody detected the ESR2 protein (arrow).

Please note: All products are 'FOR RESEARCH USE ONLY. NOT FOR USE IN DIAGNOSTIC OR THERAPEUTIC PROCEDURES'.