

FGG Antibody (Ascites)

Mouse Monoclonal Antibody (Mab)
Catalog # AM2135a

Product Information

Application	WB, E
Primary Accession	P02679
Other Accession	NP_068656
Reactivity	Human
Host	Mouse
Clonality	Monoclonal
Isotype	IgG1
Clone Names	546CT11.4.3
Antigen Region	417-445

Additional Information

Other Names	Fibrinogen gamma chain, FGG
Target/Specificity	This FGG antibody is generated from mice immunized with a KLH conjugated synthetic peptide between 417-445 amino acids from human FGG .
Dilution	WB~~1:200~1600 E~~Use at an assay dependent concentration.
Format	Mouse monoclonal antibody supplied in crude ascites with 0.09% (W/V) sodium azide.
Storage	Maintain refrigerated at 2-8°C for up to 2 weeks. For long term storage store at -20°C in small aliquots to prevent freeze-thaw cycles.
Precautions	FGG Antibody (Ascites) is for research use only and not for use in diagnostic or therapeutic procedures.

Protein Information

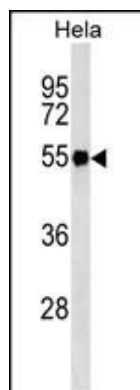
Background

The protein encoded by this gene is the gamma component of fibrinogen, a blood-borne glycoprotein comprised of three pairs of nonidentical polypeptide chains. Following vascular injury, fibrinogen is cleaved by thrombin to form fibrin which is the most abundant component of blood clots. In addition, various cleavage products of fibrinogen and fibrin regulate cell adhesion and spreading, display vasoconstrictor and chemotactic activities, and are mitogens for several cell types. Mutations in this gene lead to several disorders, including dysfibrinogenemia, hypofibrinogenemia and thrombophilia. Alternative splicing results in two transcript variants encoding different isoforms.

References

- Bahadori, B., et al. *Thromb. Res.* 126(4):350-352(2010)
Bailey, S.D., et al. *Diabetes Care* 33(10):2250-2253(2010)
Fujihara, N., et al. *Thromb. Haemost.* 104(2):213-223(2010)
Undas, A., et al. *Thromb. Haemost.* 104(2):415-417(2010)
Davila, S., et al. *Genes Immun.* 11(3):232-238(2010)

Images



FGG Antibody (Ascites)(Cat. #AM2135a) western blot analysis in HeLa cell line lysates (35µg/lane). This demonstrates the FGG antibody detected the FGG protein (arrow).

Please note: All products are 'FOR RESEARCH USE ONLY. NOT FOR USE IN DIAGNOSTIC OR THERAPEUTIC PROCEDURES'.