

CD138 Antibody

Mouse Monoclonal Antibody (Mab)

Catalog # AM2157b

Product Information

Application	WB, IF, FC, E
Primary Accession	P18827
Reactivity	Human
Host	Mouse
Clonality	Monoclonal
Isotype	IgG1
Clone Names	480CT5.4.3
Calculated MW	32462

Additional Information

Gene ID	6382
Other Names	Syndecan-1, SYND1, CD138, SDC1, SDC
Target/Specificity	This CD138 Monoclonal antibody is generated from mice immunized with a KLH conjugated synthetic peptide selected from human CD138.
Dilution	WB~~1:100~500 IF~~1:10~50 FC~~1:10~50 E~~Use at an assay dependent concentration.
Format	Purified monoclonal antibody supplied in PBS with 0.09% (W/V) sodium azide. This antibody is purified through a protein G column, followed by dialysis against PBS.
Storage	Maintain refrigerated at 2-8°C for up to 2 weeks. For long term storage store at -20°C in small aliquots to prevent freeze-thaw cycles.
Precautions	CD138 Antibody is for research use only and not for use in diagnostic or therapeutic procedures.

Protein Information

Name	SDC1 (HGNC:10658)
Synonyms	SDC
Function	Cell surface proteoglycan that contains both heparan sulfate and chondroitin sulfate and that links the cytoskeleton to the interstitial matrix (By similarity). Regulates exosome biogenesis in concert with SDCBP and PDCD6IP (PubMed: 22660413). Able to induce its own expression in dental

mesenchymal cells and also in the neighboring dental epithelial cells via an MSX1-mediated pathway (By similarity).

Cellular Location

Membrane; Single-pass type I membrane protein. Secreted Secreted, extracellular exosome Note=Shedding of the ectodomain produces a soluble form

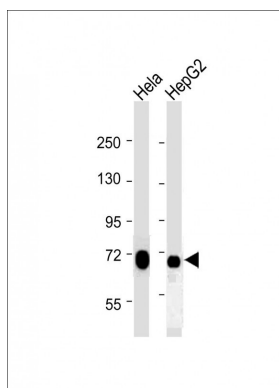
Tissue Location

Detected in placenta (at protein level) (PubMed:32337544). Detected in fibroblasts (at protein level) (PubMed:36213313).

Background

The protein encoded by this gene is a transmembrane (type I) heparan sulfate proteoglycan and is a member of the syndecan proteoglycan family. The syndecans mediate cell binding, cell signaling, and cytoskeletal organization and syndecan receptors are required for internalization of the HIV-1 tat protein. The syndecan-1 protein functions as an integral membrane protein and participates in cell proliferation, cell migration and cell-matrix interactions via its receptor for extracellular matrix proteins. Altered syndecan-1 expression has been detected in several different tumor types. While several transcript variants may exist for this gene, the full-length nature of only two have been described to date. These two represent the major variants of this gene and encode the same protein.

Images



All lanes : Anti-CD138 Antibody at 1:2000 dilution Lane 1: HeLa whole cell lysate Lane 2: HepG2 whole cell lysate Lysates/proteins at 20 µg per lane. Secondary Goat Anti-Mouse IgG, (H+L), Peroxidase conjugated at 1/10000 dilution. Predicted band size : 90 kDa Blocking/Dilution buffer: 5% NFDM/TBST.

Please note: All products are 'FOR RESEARCH USE ONLY. NOT FOR USE IN DIAGNOSTIC OR THERAPEUTIC PROCEDURES'.