

ENO1 Antibody

Mouse Monoclonal Antibody (Mab)

Catalog # AM2192b

Product Information

Application	WB, IHC-P, E
Primary Accession	P06733
Reactivity	Human, Mouse
Host	Mouse
Clonality	Monoclonal
Isotype	IgG (k)
Clone Names	786CT6.6.4
Calculated MW	47169

Additional Information

Gene ID	2023
Other Names	Alpha-enolase, 2-phospho-D-glycerate hydro-lyase, C-myc promoter-binding protein, Enolase 1, MBP-1, MPB-1, Non-neural enolase, NNE, Phosphopyruvate hydratase, Plasminogen-binding protein, ENO1, ENO1L1, MBPB1, MPB1
Target/Specificity	Purified His-tagged ENO1 protein was used to produced this monoclonal antibody.
Dilution	WB~~1:1000 IHC-P~~1:100~500 E~~Use at an assay dependent concentration.
Format	Purified monoclonal antibody supplied in PBS with 0.09% (W/V) sodium azide. This antibody is purified through a protein G column, followed by dialysis against PBS.
Storage	Maintain refrigerated at 2-8°C for up to 2 weeks. For long term storage store at -20°C in small aliquots to prevent freeze-thaw cycles.
Precautions	ENO1 Antibody is for research use only and not for use in diagnostic or therapeutic procedures.

Protein Information

Name	ENO1
Synonyms	ENO1L1, MBPB1, MPB1
Function	Glycolytic enzyme the catalyzes the conversion of 2- phosphoglycerate to phosphoenolpyruvate (PubMed: 1369209 , PubMed: 29775581). In addition to

glycolysis, involved in various processes such as growth control, hypoxia tolerance and allergic responses (PubMed:[10802057](#), PubMed:[12666133](#), PubMed:[2005901](#), PubMed:[29775581](#)). May also function in the intravascular and pericellular fibrinolytic system due to its ability to serve as a receptor and activator of plasminogen on the cell surface of several cell-types such as leukocytes and neurons (PubMed:[12666133](#)). Stimulates immunoglobulin production (PubMed:[1369209](#)).

Cellular Location

Cytoplasm. Cell membrane. Cytoplasm, myofibril, sarcomere, M line. Note=Can translocate to the plasma membrane in either the homodimeric (alpha/alpha) or heterodimeric (alpha/gamma) form. ENO1 is localized to the M line

Tissue Location

The alpha/alpha homodimer is expressed in embryo and in most adult tissues. The alpha/beta heterodimer and the beta/beta homodimer are found in striated muscle, and the alpha/gamma heterodimer and the gamma/gamma homodimer in neurons

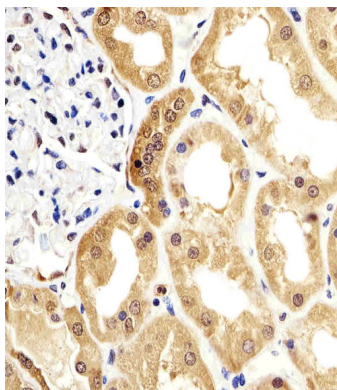
Background

Multifunctional enzyme that, as well as its role in glycolysis, plays a part in various processes such as growth control, hypoxia tolerance and allergic responses. May also function in the intravascular and pericellular fibrinolytic system due to its ability to serve as a receptor and activator of plasminogen on the cell surface of several cell-types such as leukocytes and neurons. Stimulates immunoglobulin production. MBP1 binds to the myc promoter and acts as a transcriptional repressor. May be a tumor suppressor.

References

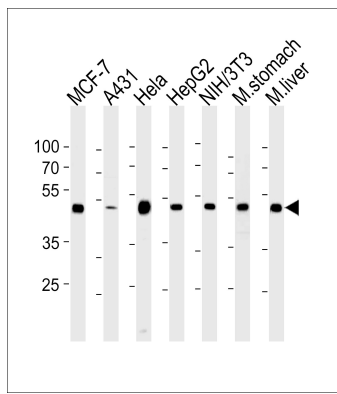
- Giallongo A., et al. Proc. Natl. Acad. Sci. U.S.A. 83:6741-6745(1986).
Giallongo A., et al. Eur. J. Biochem. 190:567-573(1990).
Ray R., et al. Mol. Cell. Biol. 11:2154-2161(1991).
Walter M., et al. J. Autoimmun. 8:931-945(1995).
Kalnina N., et al. Submitted (MAY-2003) to the EMBL/GenBank/DDBJ databases.

Images



Immunohistochemical analysis of paraffin-embedded H. kideny section using ENO1 Antibody(Cat#AM2192b). AM2192b was diluted at 1:25 dilution. A undiluted biotinylated goat polyvalent antibody was used as the secondary, followed by DAB staining.

ENO1 Antibody (Cat. #AM2192b) western blot analysis in MCF-7,A431,Hela,HepG2,mouse NIH/3T3 cell line and mouse stomach,liver tissue lysates (35µg/lane).This demonstrates the ENO1 antibody detected the ENO1 protein (arrow).



Please note: All products are 'FOR RESEARCH USE ONLY. NOT FOR USE IN DIAGNOSTIC OR THERAPEUTIC PROCEDURES'.