

FLNA Antibody

Mouse Monoclonal Antibody (Mab)

Catalog # AM2240b

Product Information

Application	WB, IF, E
Primary Accession	P21333
Reactivity	Human, Mouse, Rat
Host	Mouse
Clonality	Monoclonal
Isotype	IgG1
Clone Names	1273CT424.104.153
Calculated MW	280739
Antigen Region	1-360

Additional Information

Gene ID	2316
Other Names	Filamin-A, FLN-A, Actin-binding protein 280, ABP-280, Alpha-filamin, Endothelial actin-binding protein, Filamin-1, Non-muscle filamin, FLNA, FLN, FLN1
Target/Specificity	Purified His-tagged FLNA protein was used to produced this monoclonal antibody.
Dilution	WB~~1:4000 IF~~1:25 E~~Use at an assay dependent concentration.
Format	Mouse monoclonal antibody supplied in crude ascites with 0.09% (W/V) sodium azide.
Storage	Maintain refrigerated at 2-8°C for up to 2 weeks. For long term storage store at -20°C in small aliquots to prevent freeze-thaw cycles.
Precautions	FLNA Antibody is for research use only and not for use in diagnostic or therapeutic procedures.

Protein Information

Name	FLNA
Synonyms	FLN, FLN1
Function	Promotes orthogonal branching of actin filaments and links actin filaments to membrane glycoproteins. Anchors various transmembrane proteins to the actin cytoskeleton and serves as a scaffold for a wide range of cytoplasmic

signaling proteins. Interaction with FLNB may allow neuroblast migration from the ventricular zone into the cortical plate. Tethers cell surface- localized furin, modulates its rate of internalization and directs its intracellular trafficking (By similarity). Involved in ciliogenesis. Plays a role in cell-cell contacts and adherens junctions during the development of blood vessels, heart and brain organs. Plays a role in platelets morphology through interaction with SYK that regulates ITAM- and ITAM-like-containing receptor signaling, resulting in by platelet cytoskeleton organization maintenance (By similarity). During the axon guidance process, required for growth cone collapse induced by SEMA3A-mediated stimulation of neurons (PubMed:[25358863](#)).

Cellular Location

Cytoplasm, cell cortex. Cytoplasm, cytoskeleton {ECO:0000250|UniProtKB:Q8BTM8}. Perikaryon {ECO:0000250|UniProtKB:Q8BTM8}. Cell projection, growth cone {ECO:0000250|UniProtKB:Q8BTM8}. Cell projection, podosome {ECO:0000250|UniProtKB:Q8BTM8}. Note=Colocalizes with CPMR1 in the central region of DRG neuron growth cone (By similarity). Following SEMA3A stimulation of DRG neurons, colocalizes with F-actin (By similarity). Localized to the core of myotube podosomes (By similarity). {ECO:0000250|UniProtKB:Q8BTM8}

Tissue Location

Ubiquitous.

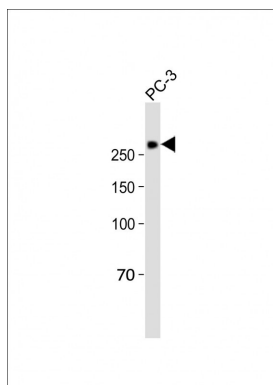
Background

Promotes orthogonal branching of actin filaments and links actin filaments to membrane glycoproteins. Anchors various transmembrane proteins to the actin cytoskeleton and serves as a scaffold for a wide range of cytoplasmic signaling proteins. Interaction with FLNA may allow neuroblast migration from the ventricular zone into the cortical plate. Tethers cell surface-localized furin, modulates its rate of internalization and directs its intracellular trafficking (By similarity). Involved in ciliogenesis.

References

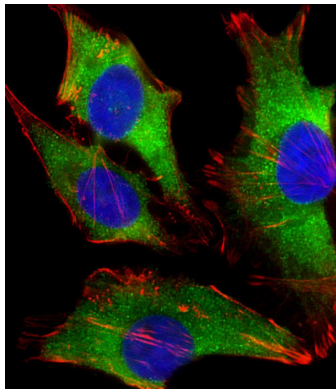
Gorlin J.B., et al. J. Cell Biol. 111:1089-1105(1990).
 Patrosso M.C., et al. Genomics 21:71-76(1994).
 Chen E.Y., et al. Hum. Mol. Genet. 5:659-668(1996).
 Li J., et al. Mol. Cell. Proteomics 9:2517-2528(2010).
 Ota T., et al. Nat. Genet. 36:40-45(2004).

Images

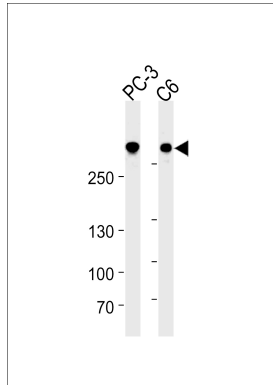


All lanes: Anti-FLNA at 1:1000 dilution + PC-3 whole cell lysate Lysates/proteins at 20 µg per lane. Secondary: Goat Anti-Mouse IgG, (H+L), Peroxidase conjugated (ASP1613) at 1/8000 dilution. Observed band size: 280 kDa
 Blocking/Dilution buffer: 5% NFDm/TBST.

Immunofluorescent analysis of 4%



paraformaldehyde-fixed, 0.1% Triton X-100 permeabilized HeLa (human cervical epithelial adenocarcinoma cell line) cells labeling FLNA with AM2240B at 1/25 dilution, followed by Dylight® 488-conjugated goat anti-mouse IgG (NA166821) secondary antibody at 1/200 dilution (green). Immunofluorescence image showing cytoplasm staining on HeLa cell line. Cytoplasmic actin is detected with Dylight® 554 Phalloidin (PD18466410) at 1/100 dilution (red). The nuclear counter stain is DAPI (blue).



FLNA Antibody (Cat. #AM2240b) western blot analysis in PC-3 and C6 cell line lysates (35µg/lane). This demonstrates the FLNA antibody detected the FLNA protein (arrow).

Citations

- [Filamin A Expression Negatively Regulates Sphingosine-1-Phosphate-Induced NF-κB Activation in Melanoma Cells by Inhibition of Akt Signaling.](#)

Please note: All products are 'FOR RESEARCH USE ONLY. NOT FOR USE IN DIAGNOSTIC OR THERAPEUTIC PROCEDURES'.