

POU2AF1 Antibody

Mouse Monoclonal Antibody (Mab)

Catalog # AM2243b

Product Information

Application	WB, E
Primary Accession	Q16633
Reactivity	Human
Host	Mouse
Clonality	Monoclonal
Isotype	IgG1, κ
Clone Names	1170CT1.1.1
Calculated MW	27436

Additional Information

Gene ID	5450
Other Names	POU domain class 2-associating factor 1, B-cell-specific coactivator OBF-1, BOB-1, OCA-B, OCT-binding factor 1, POU2AF1, OBF1
Target/Specificity	Purified His-tagged POU2AF1 protein was used to produced this monoclonal antibody.
Dilution	WB~~1:4000 E~~Use at an assay dependent concentration.
Format	Purified monoclonal antibody supplied in PBS with 0.09% (W/V) sodium azide. This antibody is purified through a protein G column, followed by dialysis against PBS.
Storage	Maintain refrigerated at 2-8°C for up to 2 weeks. For long term storage store at -20°C in small aliquots to prevent freeze-thaw cycles.
Precautions	POU2AF1 Antibody is for research use only and not for use in diagnostic or therapeutic procedures.

Protein Information

Name	POU2AF1 (HGNC:9211)
Function	Transcriptional coactivator that specifically associates with either POU2F1/OCT1 or POU2F2/OCT2 (PubMed: 7859290). It boosts the POU2F1/OCT1 mediated promoter activity and to a lesser extent, that of POU2F2/OCT2 (PubMed: 7779176). It recognizes the POU domains of POU2F1/OCT1 and POU2F2/OCT2 (PubMed: 7779176). It is essential for the response of B-cells to antigens and required for the formation of germinal

centers (PubMed:[7623806](#), PubMed:[7859290](#)). Regulates IL6 expression in B cells as POU2F2/OCT2 coactivator (By similarity).

Cellular Location

Nucleus.

Tissue Location

B-cell specific (PubMed:7779176, PubMed:7859290). Detected in mainly in spleen, but also in thymus, peripheral blood leukocyte and small intestine (PubMed:7779176, PubMed:7859290)

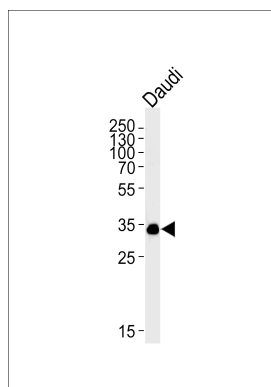
Background

Transcriptional coactivator that specifically associates with either OCT1 or OCT2. It boosts the OCT1 mediated promoter activity and to a lesser extent, that of OCT2. It has no intrinsic DNA-binding activity. It recognizes the POU domains of OCT1 and OCT2. It is essential for the response of B-cells to antigens and required for the formation of germinal centers.

References

Strubin M., et al. Cell 80:497-506(1995).
Gstaiger M., et al. Nature 373:360-362(1995).
Galiegue-Zouitina S., et al. C. R. Acad. Sci. III, Sci. Vie 318:1125-1131(1995).
Luo Y., et al. Mol. Cell. Biol. 15:4115-4124(1995).
Ota T., et al. Nat. Genet. 36:40-45(2004).

Images



POU2AF1 Antibody (Cat. #AM2243b) western blot analysis in Daudi cell line lysates (35µg/lane). This demonstrates the POU2AF1 antibody detected the POU2AF1 protein (arrow).

Please note: All products are 'FOR RESEARCH USE ONLY. NOT FOR USE IN DIAGNOSTIC OR THERAPEUTIC PROCEDURES'.