

CREB3L4 Antibody (M01)

Purified Mouse Monoclonal Antibody (Mab)

Catalog # AM2245b

Product Information

Application	WB, E
Primary Accession	Q8TEY5
Reactivity	Human, Rat, Mouse
Host	Mouse
Clonality	Monoclonal
Isotype	IgG1
Clone Names	1165CT16.1.1
Calculated MW	43432
Antigen Region	1-310

Additional Information

Gene ID	148327
Other Names	Cyclic AMP-responsive element-binding protein 3-like protein 4, cAMP-responsive element-binding protein 3-like protein 4, Androgen-induced basic leucine zipper protein, AIBZIP, Attaching to CRE-like 1, ATCE1, Cyclic AMP-responsive element-binding protein 4, CREB-4, cAMP-responsive element-binding protein 4, Transcript induced in spermiogenesis protein 40, Tisp40, hJAL, Processed cyclic AMP-responsive element-binding protein 3-like protein 4, CREB3L4, AIBZIP, CREB4, JAL
Target/Specificity	This CREB3L4 antibody is generated from mice immunized with a recombinant between 1-300 amino acids from the region of human CREB3L4.
Dilution	WB~~1:1000 E~~Use at an assay dependent concentration.
Format	Purified monoclonal antibody supplied in PBS with 0.09% (W/V) sodium azide. This antibody is purified through a protein G column, followed by dialysis against PBS.
Storage	Maintain refrigerated at 2-8°C for up to 2 weeks. For long term storage store at -20°C in small aliquots to prevent freeze-thaw cycles.
Precautions	CREB3L4 Antibody (M01) is for research use only and not for use in diagnostic or therapeutic procedures.

Protein Information

Name	CREB3L4
-------------	---------

Synonyms	AIBZIP, CREB4, JAL
Function	Transcriptional activator that may play a role in the unfolded protein response. Binds to the UPR element (UPRE) but not to CRE element. Preferentially binds DNA with to the consensus sequence 5'-T[GT]ACGT[GA][GT]-3' and has transcriptional activation activity from UPRE. Binds to NF-kappa-B site and has transcriptional activation activity from NF-kappa-B-containing regulatory elements (By similarity).
Cellular Location	Endoplasmic reticulum membrane; Single-pass type II membrane protein. Golgi apparatus membrane; Single- pass type II membrane protein. Note=May also be located in Golgi apparatus
Tissue Location	According to PubMed:11830526, exclusively expressed in the prostate. Expressed in breast and prostate cancer cell lines Expressed in prostatic luminal epithelial cells (at protein level) Expression is significantly more abundant in prostate cancer than in benign prostatic tissue (prostatic hyperplasia). According to PubMed:12111373, also expressed in brain, pancreas and skeletal muscle, and at lower levels in small intestine, testis, leukocyte and thymus

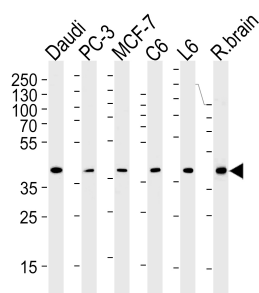
Background

Transcriptional activator that may play a role in the unfolded protein response. Binds to the UPR element (UPRE) but not to CRE element. Preferentially binds DNA with to the consensus sequence 5'-T[GT]ACGT[GA][GT]-3' and has transcriptional activation activity from UPRE. Binds to NF-kappa-B site and has transcriptional activation activity from NF-kappa-B-containing regulatory elements (By similarity).

References

Qi H.,et al.Cancer Res. 62:721-733(2002). Cao G.,et al.J. Hum. Genet. 47:373-376(2002). Fujita K.,et al. Submitted (DEC-2000) to the EMBL/GenBank/DDBJ databases.Guo J.H.,et al. Submitted (AUG-2001) to the EMBL/GenBank/DDBJ databases. Ota T.,et al.Nat. Genet. 36:40-45(2004).

Images



CREB3L4 Antibody (M01) (Cat.# AM2245b) western blot analysis in Daudi,PC-3,MCF-7,rat C6 and L6 cell line ,rat brain tissue lysates (35µg/lane).This demonstrates the CREB3L4 (M01)antibody detected the CREB3L4 (M01)protein (arrow).

Please note: All products are 'FOR RESEARCH USE ONLY. NOT FOR USE IN DIAGNOSTIC OR THERAPEUTIC PROCEDURES'.