

OTX2 Anitbody

Purified Mouse Monoclonal Antibody (Mab)

Catalog # AM8426b

Product Information

Application	WB, E
Primary Accession	P32243
Reactivity	Human
Host	Mouse
Clonality	Monoclonal
Isotype	IgG1, κ
Clone Names	1313CT817.185.162
Calculated MW	31636

Additional Information

Gene ID	5015
Other Names	Homeobox protein OTX2, Orthodenticle homolog 2, OTX2
Target/Specificity	This antibody is generated from a mouse immunized with a recombination protein from human.
Dilution	WB~~1:2000 E~~Use at an assay dependent concentration.
Format	Purified monoclonal antibody supplied in PBS with 0.09% (W/V) sodium azide. This antibody is purified through a protein G column, followed by dialysis against PBS.
Storage	Maintain refrigerated at 2-8°C for up to 2 weeks. For long term storage store at -20°C in small aliquots to prevent freeze-thaw cycles.
Precautions	OTX2 Anitbody is for research use only and not for use in diagnostic or therapeutic procedures.

Protein Information

Name	OTX2
Function	Transcription factor probably involved in the development of the brain and the sense organs. Can bind to the bicoid/BCD target sequence (BTS): 5'-TCTAATCCC-3'.
Cellular Location	Nucleus.

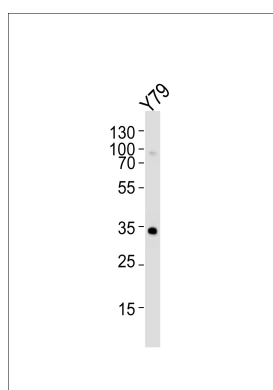
Background

Probably plays a role in the development of the brain and the sense organs. Can bind to the BCD target sequence (BTS): 5'-TCTAATCCC-3'.

References

Simeone A.,et al.EMBO J. 12:2735-2747(1993).
Perrault I.,et al.Submitted (AUG-2000) to the EMBL/GenBank/DDBJ databases.
Fong S.L.,et al.Curr. Eye Res. 18:283-291(1999).
Ota T.,et al.Nat. Genet. 36:40-45(2004).
Mural R.J.,et al.Submitted (JUL-2005) to the EMBL/GenBank/DDBJ databases.

Images



Western blot analysis of lysate from Y79 cell line, using OTX2 Antibody (Cat. #AM8426b). AM8426b was diluted at 1:1000. A goat anti-mouse IgG H&L (HRP) at 1:3000 dilution was used as the secondary antibody. Lysate at 35µg.

Please note: All products are 'FOR RESEARCH USE ONLY. NOT FOR USE IN DIAGNOSTIC OR THERAPEUTIC PROCEDURES'.