

# GPR56 Antibody

Purified Mouse Monoclonal Antibody (Mab)

Catalog # AM8454b

## Product Information

---

<b>Application</b>	WB, E
<b>Primary Accession</b>	<a href="#">Q9Y653</a>
<b>Reactivity</b>	Human
<b>Host</b>	Mouse
<b>Clonality</b>	monoclonal
<b>Isotype</b>	IgG1,k
<b>Clone Names</b>	1443CT377.65.29
<b>Calculated MW</b>	77738
<b>Antigen Region</b>	Recombinant Protein

## Additional Information

---

<b>Gene ID</b>	9289
<b>Other Names</b>	G-protein coupled receptor 56, Protein TM7XN1, GPR56 N-terminal fragment, GPR56 NT, GPR56(N), GPR56 extracellular subunit, GPR56 subunit alpha, GPR56 C-terminal fragment, GPR56 CT, GPR56(C), GPR56 seven-transmembrane subunit, GPR56 7TM, GPR56 subunit beta, GPR56, TM7LN4, TM7XN1
<b>Target/Specificity</b>	This antibody is generated from a mouse immunized with a recombinant protein.
<b>Dilution</b>	WB~~1:2000 E~~Use at an assay dependent concentration.
<b>Format</b>	Purified monoclonal antibody supplied in PBS with 0.09% (W/V) sodium azide. This antibody is purified through a protein G column, followed by dialysis against PBS.
<b>Storage</b>	Maintain refrigerated at 2-8°C for up to 2 weeks. For long term storage store at -20°C in small aliquots to prevent freeze-thaw cycles.
<b>Precautions</b>	GPR56 Antibody is for research use only and not for use in diagnostic or therapeutic procedures.

## Protein Information

---

<b>Name</b>	ADGRG1 {ECO:0000303 PubMed:26710850, ECO:0000312 HGNC:HGNC:4512}
<b>Function</b>	Adhesion G-protein coupled receptor (aGPCR) for steroid hormone

17alpha-hydroxypregnenolone (17-OH), which is involved in cell adhesion and cell-cell interactions (PubMed:[39389061](#)). Ligand binding causes a conformation change that triggers signaling via guanine nucleotide-binding proteins (G proteins) and modulates the activity of downstream effectors, such as RhoA pathway (PubMed:[28874577](#), PubMed:[35418682](#), PubMed:[39389061](#)). ADGRG1 is coupled to G(12) and/or G(13) G proteins (GNA12 and GNA13, respectively) and mediates the activation Rho small GTPases (PubMed:[22238662](#), PubMed:[28424266](#), PubMed:[35418682](#), PubMed:[39389061](#)). Acts as a potent suppressor of ferroptosis: binding to 17-OH-binding initiates signaling that down- regulates CD36 and alleviates ferroptosis-induced liver injury (By similarity). Ligand-binding also induces cell adhesion activity via association with proteins such as collagen III/COL3A1 and TGM2 (By similarity). Mediates cell matrix adhesion in developing neurons and hematopoietic stem cells (By similarity). Involved in cortical development, specifically in maintenance of the pial basement membrane integrity and in cortical lamination: association with COL3A1 in the developing brain inhibits neuronal migration via activation of the RhoA pathway (PubMed:[24531968](#)). Together with TGM2, acts as a regulator of myelination and myelin repair in oligodendrocyte precursor cells (By similarity). Acts as a hemostatic sensor of shear force: G protein- coupled receptor signaling is activated in response to shear force in platelets, promoting G(13) G protein signaling, and platelet shape change and aggregation in a COL3A1-dependent manner (PubMed:[33097663](#)). Acts as an inhibitor of VEGFA production thereby inhibiting angiogenesis through a signaling pathway mediated by PRKCA (PubMed:[16757564](#), PubMed:[19572147](#), PubMed:[21724588](#)). Plays a role in the maintenance of hematopoietic stem cells in bone marrow niche (By similarity). Plays an essential role in testis development (By similarity).

#### Cellular Location

Cell membrane; Multi-pass membrane protein [Adhesion G-protein coupled receptor G1, C- terminal fragment]: Membrane raft Note=Interaction with its ligand COL3A1 leads to the release of ADGRG1 NT from the membrane and triggers the association of ADGRG1 CT with lipid rafts.

#### Tissue Location

Widely distributed with highest levels found in thyroid gland, brain and heart. Expressed in a great number of tumor cells. Expression is down-regulated in different tumors from highly metastatic cells.

## Background

---

Involved in cell adhesion and probably in cell-cell interactions. Regulates the migration of neural precursor cells. Receptor for collagen III/COL3A1 in the developing brain and involved in regulation of cortical development, specifically in maintenance of the pial basement membrane integrity and in cortical lamination. Binding to the COL3A1 ligand inhibits neuronal migration and activates the RhoA pathway by coupling to GNA13 and possibly GNA12. Isoforms show differences in receptor signaling, specifically in serum response element (SRE) transcriptional activation upon overexpression. Overexpression inhibits melanoma tumor growth and metastasis and, during melanoma progression, regulates VEGFA production and angiogenesis through PRKCA; unprocessed GPR56 is inhibiting and GPR56 NT is activating angiogenesis.

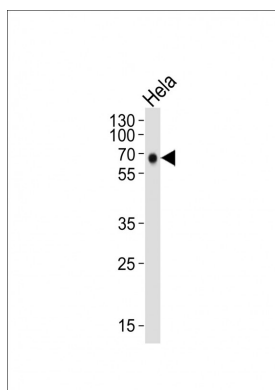
## References

---

- Liu M.,et al.Genomics 55:296-305(1999).  
 Zendman A.J.W.,et al.FEBS Lett. 446:292-298(1999).  
 Kaighin V.A.,et al.Submitted (DEC-2007) to the EMBL/GenBank/DDBJ databases.  
 Clark H.F.,et al.Genome Res. 13:2265-2270(2003).  
 Ota T.,et al.Nat. Genet. 36:40-45(2004).

## Images

---



Western blot analysis of lysate from HeLa cell line, using GPR56(Cat. #AM8454b). AM8454b was diluted at 1:2000. A goat anti-mouse IgG H&L(HRP) at 1:10000 dilution was used as the secondary antibody. Lysate at 20µg.

Please note: All products are 'FOR RESEARCH USE ONLY. NOT FOR USE IN DIAGNOSTIC OR THERAPEUTIC PROCEDURES'.