

# BAP31 Antibody

Purified Mouse Monoclonal Antibody (Mab)

Catalog # AM8468b

## Product Information

---

<b>Application</b>	WB, IHC-P, E
<b>Primary Accession</b>	<a href="#">P51572</a>
<b>Reactivity</b>	Human, Mouse
<b>Host</b>	Mouse
<b>Clonality</b>	monoclonal
<b>Isotype</b>	IgG1,k
<b>Clone Names</b>	1502CT208.31.16
<b>Calculated MW</b>	27992
<b>Antigen Region</b>	1-246

## Additional Information

---

<b>Gene ID</b>	10134
<b>Other Names</b>	B-cell receptor-associated protein 31, BCR-associated protein 31, Bap31, 6C6-AG tumor-associated antigen, Protein CDM, p28, BCAP31, BAP31, DXS1357E
<b>Target/Specificity</b>	This BAP31 antibody is generated from a mouse immunized with a recombinant.
<b>Dilution</b>	WB~~1:2000 IHC-P~~1:100~500 E~~Use at an assay dependent concentration.
<b>Format</b>	Purified monoclonal antibody supplied in PBS with 0.09% (W/V) sodium azide. This antibody is purified through a protein G column, followed by dialysis against PBS.
<b>Storage</b>	Maintain refrigerated at 2-8°C for up to 2 weeks. For long term storage store at -20°C in small aliquots to prevent freeze-thaw cycles.
<b>Precautions</b>	BAP31 Antibody is for research use only and not for use in diagnostic or therapeutic procedures.

## Protein Information

---

<b>Name</b>	BCAP31 ( <a href="#">HGNC:16695</a> )
<b>Function</b>	Functions as a chaperone protein (PubMed: <a href="#">18287538</a> , PubMed: <a href="#">9396746</a> ). Is one of the most abundant endoplasmic reticulum (ER) proteins (PubMed: <a href="#">18287538</a> , PubMed: <a href="#">9396746</a> ). Plays a role in the export of secreted proteins in the ER, the recognition of abnormally folded protein and their

targeting to the ER associated-degradation (ERAD) (PubMed:[18287538](#), PubMed:[9396746](#)). Also serves as a cargo receptor for the export of transmembrane proteins (By similarity). Plays a role in the assembly of the mitochondrial membrane respiratory chain NADH dehydrogenase (Complex I) by stimulating the translocation of NDUFS4 and NDUFB11 from the cytosol to the mitochondria via interaction with TOMM40 (PubMed:[31206022](#)). In response to ER stress, delocalizes from the ER-mitochondria contact sites and binds BCL2 (PubMed:[31206022](#)). May be involved in CASP8-mediated apoptosis (PubMed:[10958671](#)).

#### Cellular Location

Endoplasmic reticulum membrane; Multi-pass membrane protein  
Endoplasmic reticulum-Golgi intermediate compartment membrane;  
Multi-pass membrane protein. Note=May shuttle between the ER and the intermediate compartment/cis-Golgi complex (PubMed:9396746). Associates with the mitochondria-associated endoplasmic reticulum membrane via interaction with TOMM40 (PubMed:31206022)

#### Tissue Location

Ubiquitous. Highly expressed in neurons and discrete endocrine cells.

## Background

---

Functions as a chaperone protein. Is one of the most abundant endoplasmic reticulum (ER) proteins. Plays a role in the export of secreted proteins in the ER, the recognition of abnormally folded protein and their targeting to the ER associated-degradation (ERAD). Also serves as a cargo receptor for the export of transmembrane proteins. May be involved in CASP8- mediated apoptosis.

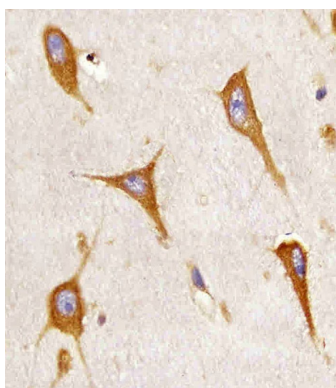
## References

---

Mosser J.,et al.Genomics 22:469-471(1994).  
Li E.,et al.Eur. J. Biochem. 238:631-638(1996).  
Adachi T.,et al.EMBO J. 15:1534-1541(1996).  
Ota T.,et al.Nat. Genet. 36:40-45(2004).  
Ross M.T.,et al.Nature 434:325-337(2005).

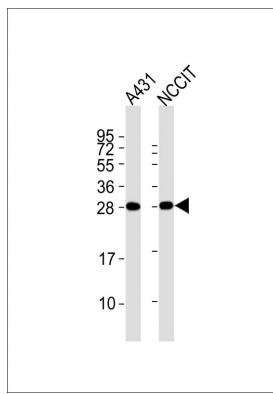
## Images

---



AM8468b staining BAP31 in human brain sections by Immunohistochemistry (IHC-P - paraformaldehyde-fixed, paraffin-embedded sections). Tissue was fixed with formaldehyde and blocked with 3% BSA for 0.5 hour at room temperature; antigen retrieval was by heat mediation with a citrate buffer (pH6). Samples were incubated with primary antibody (1/25) for 1 hour at 37°C. A undiluted biotinylated goat polyvalent antibody was used as the secondary antibody.

All lanes : Anti-BAP31 Antibody at 1:2000 dilution Lane 1: A431 whole cell lysates Lane 2: NCCIT whole cell lysates Lysates/proteins at 20 µg per lane. Secondary Goat Anti-mouse IgG, (H+L), Peroxidase conjugated at 1/10000 dilution Predicted band size : 28 kDa Blocking/Dilution buffer: 5% NFDM/TBST.



Please note: All products are 'FOR RESEARCH USE ONLY. NOT FOR USE IN DIAGNOSTIC OR THERAPEUTIC PROCEDURES'.