

# FAM120A Antibody [Knockdown Validated]

Purified Mouse Monoclonal Antibody (Mab)

Catalog # AM8475b

## Product Information

---

<b>Application</b>	WB, IHC-P, IF, E
<b>Primary Accession</b>	<a href="#">Q9NZB2</a>
<b>Reactivity</b>	Human
<b>Host</b>	Mouse
<b>Clonality</b>	monoclonal
<b>Isotype</b>	IgG1,k
<b>Clone Names</b>	1501CT803.19.85.5
<b>Calculated MW</b>	121888

## Additional Information

---

<b>Gene ID</b>	23196
<b>Other Names</b>	Constitutive coactivator of PPAR-gamma-like protein 1, Oxidative stress-associated Src activator, Protein FAM120A, FAM120A, C9orf10, KIAA0183, OSSA
<b>Target/Specificity</b>	This FAM120A antibody is generated from a mouse immunized with a recombinant protein of human FAM120A.
<b>Dilution</b>	WB~~1:4000 IHC-P~~1:100~500 IF~~1:25 E~~Use at an assay dependent concentration.
<b>Format</b>	Purified monoclonal antibody supplied in PBS with 0.09% (W/V) sodium azide. This antibody is purified through a protein G column, followed by dialysis against PBS.
<b>Storage</b>	Maintain refrigerated at 2-8°C for up to 2 weeks. For long term storage store at -20°C in small aliquots to prevent freeze-thaw cycles.
<b>Precautions</b>	FAM120A Antibody [Knockdown Validated] is for research use only and not for use in diagnostic or therapeutic procedures.

## Protein Information

---

<b>Name</b>	FAM120A
<b>Function</b>	Component of the oxidative stress-induced survival signaling. May regulate the activation of SRC family protein kinases (PubMed: <a href="#">19015244</a> ). May act as a scaffolding protein enabling SRC family protein kinases to phosphorylate and activate PI3-kinase (PubMed: <a href="#">19015244</a> ). Binds IGF2 RNA and promotes the

production of IGF2 protein (PubMed:[19015244](#)).

#### Cellular Location

Cytoplasm. Cell membrane; Peripheral membrane protein; Cytoplasmic side.  
Note=Translocates from the cytosol to plasma membrane after UV irradiation.

#### Tissue Location

Widely expressed (PubMed:14585507). In gastric mucosa, detected in the bottom region of the foveolar epithelium (at protein level) (PubMed:19015244).

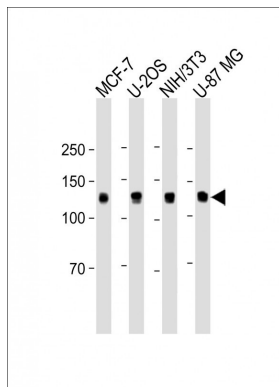
## Background

May participate in mRNA transport in the cytoplasm (By similarity). Critical component of the oxidative stress-induced survival signaling. Activates src family kinases and acts as a scaffolding protein enabling src family kinases to phosphorylate and activate PI3-kinase. Binds RNA and promotes the secretion of IGF-II. May play a pivotal role in the progression of scirrhou- type gastric cancer by supporting cancer cell survival in environments with various oxidative stresses.

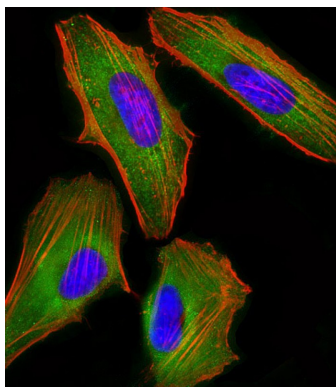
## References

Brahmbhatt S.B.,et al.Submitted (NOV-1999) to the EMBL/GenBank/DDBJ databases.  
Humphray S.J.,et al.Nature 429:369-374(2004).  
Nagase T.,et al.DNA Res. 3:17-24(1996).  
Ohara O.,et al.Submitted (JUN-2005) to the EMBL/GenBank/DDBJ databases.  
Holden S.,et al.Gene 318:149-161(2003).

## Images

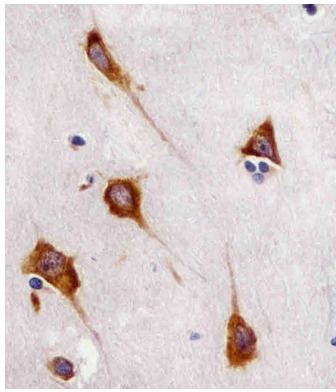


All lanes: Anti-FAM120A Antibody at 1:1000 dilution Lane 1: MCF-7 whole cell lysate Lane 2: U-2OS whole cell lysate Lane 3: NIH/3T3 whole cell lysate Lane 4: U-87 MG whole cell lysate Lysates/proteins at 20 µg per lane. Secondary: Goat Anti-Mouse IgG, (H+L), Peroxidase conjugated (ASP1613) at 1/8000 dilution. Observed band size: 135 KDa Blocking/Dilution buffer: 5% NFDm/TBST.

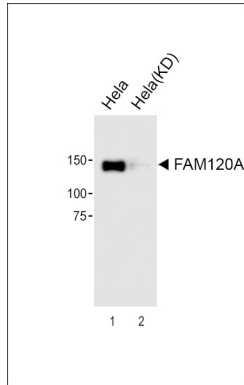


Immunofluorescent analysis of 4% paraformaldehyde-fixed, 0.1% Triton X-100 permeabilized HeLa (human cervical epithelial adenocarcinoma cell line) cells labeling FAM120A with AM8475b at 1/25 dilution, followed by Dylight® 488-conjugated goat anti-mouse IgG (NA166821) secondary antibody at 1/200 dilution (green). Immunofluorescence image showing cytoplasm staining on HeLa cell line. Cytoplasmic actin is detected with Dylight® 554 Phalloidin (PD18466410) at 1/100 dilution (red).The nuclear counter stain is DAPI (blue).

AM8475b staining FAM120A in human brain sections by Immunohistochemistry (IHC-P - paraformaldehyde-fixed, paraffin-embedded sections). Tissue was fixed with



formaldehyde and blocked with 3% BSA for 0.5 hour at room temperature; antigen retrieval was by heat mediation with a citrate buffer (pH6). Samples were incubated with primary antibody (1/25) for 1 hour at 37°C. A undiluted biotinylated goat polyvalent antibody was used as the secondary antibody.



All lanes : Anti-FAM120A Antibody at 1:2000 dilution Lane 1: Hela Lane 2: Hela-Knockdown Lysates/proteins at 20 µg per lane. Secondary Goat Anti-Mouse IgG, (H+L), Peroxidase conjugated (ASP1613) at 1/8000 dilution.

Please note: All products are 'FOR RESEARCH USE ONLY. NOT FOR USE IN DIAGNOSTIC OR THERAPEUTIC PROCEDURES'.