

KIF1B Antibody

Purified Mouse Monoclonal Antibody (Mab)

Catalog # AM8480b

Product Information

Application	WB, E
Primary Accession	O60333-3
Reactivity	Human, Rat, Mouse
Host	Mouse
Clonality	monoclonal
Isotype	IgG1,k
Clone Names	1521CT681.1.2

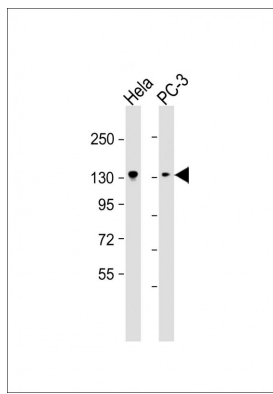
Additional Information

Target/Specificity	This KIF1B antibody is generated from a mouse immunized with a recombinant protein.
Dilution	WB~~1:2000 E~~Use at an assay dependent concentration.
Format	Purified monoclonal antibody supplied in PBS with 0.09% (W/V) sodium azide. This antibody is purified through a protein G column, followed by dialysis against PBS.
Storage	Maintain refrigerated at 2-8°C for up to 2 weeks. For long term storage store at -20°C in small aliquots to prevent freeze-thaw cycles.
Precautions	KIF1B Antibody is for research use only and not for use in diagnostic or therapeutic procedures.

Protein Information

Images

All lanes : Anti-KIF1B Antibody at 1:2000 dilution Lane 1: Hela whole cell lysate Lane 2: PC-3 whole cell lysate Lysates/proteins at 20 µg per lane. Secondary Goat Anti-mouse IgG, (H+L), Peroxidase conjugated at 1/10000 dilution. Predicted band size : 130 kDa Blocking/Dilution buffer: 5% NFDM/TBST.



Please note: All products are 'FOR RESEARCH USE ONLY. NOT FOR USE IN DIAGNOSTIC OR THERAPEUTIC PROCEDURES'.