

# TUSC2 Antibody

Purified Mouse Monoclonal Antibody (Mab)

Catalog # AM8488b

## Product Information

---

<b>Application</b>	WB, E
<b>Primary Accession</b>	<a href="#">O75896</a>
<b>Reactivity</b>	Human, Mouse
<b>Host</b>	Mouse
<b>Clonality</b>	monoclonal
<b>Isotype</b>	IgG1,k
<b>Clone Names</b>	1550CT388.74.12
<b>Calculated MW</b>	12074

## Additional Information

---

<b>Gene ID</b>	11334
<b>Other Names</b>	Tumor suppressor candidate 2, Fusion 1 protein, Fus-1 protein, PDGFA-associated protein 2, TUSC2, C3orf11, FUS1, LGCC, PDAP2
<b>Target/Specificity</b>	This TUSC2 antibody is generated from a mouse immunized with a recombinant protein of human TUSC2.
<b>Dilution</b>	WB~~1:2000 E~~Use at an assay dependent concentration.
<b>Format</b>	Purified monoclonal antibody supplied in PBS with 0.09% (W/V) sodium azide. This antibody is purified through a protein G column, followed by dialysis against PBS.
<b>Storage</b>	Maintain refrigerated at 2-8°C for up to 2 weeks. For long term storage store at -20°C in small aliquots to prevent freeze-thaw cycles.
<b>Precautions</b>	TUSC2 Antibody is for research use only and not for use in diagnostic or therapeutic procedures.

## Protein Information

---

<b>Name</b>	TUSC2
<b>Synonyms</b>	C3orf11, FUS1, LGCC, PDAP2
<b>Function</b>	May function as a tumor suppressor, inhibiting colony formation, causing G1 arrest and ultimately inducing apoptosis in homozygous 3p21.3 120-kb region-deficient cells.

## Tissue Location

Strong expression in heart, lung, skeletal muscle, kidney, and pancreas, followed by brain and liver, lowest levels in placenta

## Background

---

May function as a tumor suppressor, inhibiting colony formation, causing G1 arrest and ultimately inducing apoptosis in homozygous 3p21.3 120-kb region-deficient cells.

## References

---

Kondo M.,et al.Oncogene 20:6258-6262(2001).

Ota T.,et al.Nat. Genet. 36:40-45(2004).

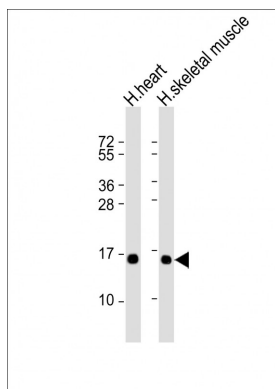
Mural R.J.,et al.Submitted (JUL-2005) to the EMBL/GenBank/DDBJ databases.

Uno F.,et al.Cancer Res. 64:2969-2976(2004).

Mayya V.,et al.Sci. Signal. 2:RA46-RA46(2009).

## Images

---



All lanes : Anti-TUSC2 Antibody at 1:2000 dilution Lane 1: human heart lysate Lane 2: human skeletal muscle lysate Lysates/proteins at 20 µg per lane. Secondary Goat Anti-mouse IgG, (H+L), Peroxidase conjugated at 1/10000 dilution. Predicted band size : 12 kDa Blocking/Dilution buffer: 5% NFDM/TBST.

Please note: All products are 'FOR RESEARCH USE ONLY. NOT FOR USE IN DIAGNOSTIC OR THERAPEUTIC PROCEDURES'.