

S100A2 Antibody

Purified Mouse Monoclonal Antibody (Mab)

Catalog # AM8507b

Product Information

Application	WB, IHC-P, IF, E
Primary Accession	P29034
Reactivity	Human
Host	Mouse
Clonality	monoclonal
Isotype	IgG1,k
Clone Names	1592CT417.84.81
Calculated MW	11117

Additional Information

Gene ID	6273
Other Names	Protein S100-A2, CAN19, Protein S-100L, S100 calcium-binding protein A2, S100A2, S100L
Target/Specificity	This S100A2 antibody is generated from a mouse immunized with a recombinant protein of human S100A2.
Dilution	WB~~1:4000 IHC-P~~1:100~500 IF~~1:25 E~~Use at an assay dependent concentration.
Format	Purified monoclonal antibody supplied in PBS with 0.09% (W/V) sodium azide. This antibody is purified through a protein G column, followed by dialysis against PBS.
Storage	Maintain refrigerated at 2-8°C for up to 2 weeks. For long term storage store at -20°C in small aliquots to prevent freeze-thaw cycles.
Precautions	S100A2 Antibody is for research use only and not for use in diagnostic or therapeutic procedures.

Protein Information

Name	S100A2
Synonyms	S100L
Function	May function as calcium sensor and modulator, contributing to cellular calcium signaling. May function by interacting with other proteins, such as TPR-containing proteins, and indirectly play a role in many physiological

processes. May also play a role in suppressing tumor cell growth.

Tissue Location

A subset of epithelial cells including normal human mammary epithelial cells and keratinocytes

Background

May function as calcium sensor and modulator, contributing to cellular calcium signaling. May function by interacting with other proteins, such as TPR-containing proteins, and indirectly play a role in many physiological processes. May also play a role in suppressing tumor cell growth.

References

Lee S.W.,et al.Proc. Natl. Acad. Sci. U.S.A. 89:2504-2508(1992).

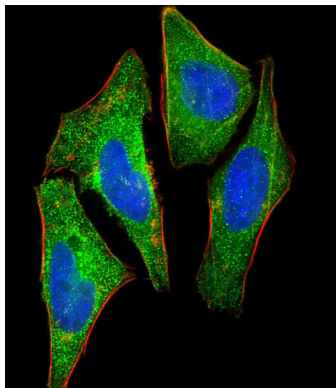
Wicki R.,et al.Cell Calcium 22:243-254(1997).

Gregory S.G.,et al.Nature 441:315-321(2006).

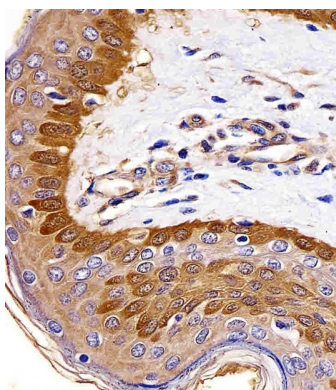
Rasmussen H.H.,et al.Electrophoresis 13:960-969(1992).

Shimamoto S.,et al.FEBS Lett. 584:1119-1125(2010).

Images

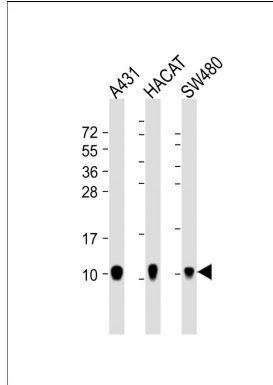
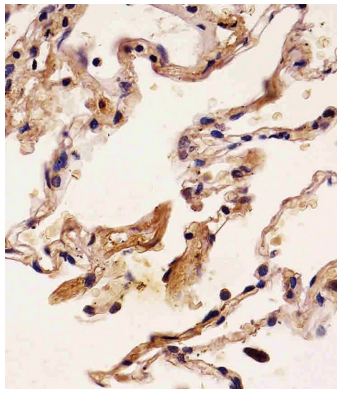


Immunofluorescent analysis of 4% paraformaldehyde-fixed, 0.1% Triton X-100 permeabilized HeLa (human cervical epithelial adenocarcinoma cell line) cells labeling S100A2 with AM8507b at 1/25 dilution, followed by Dylight® 488-conjugated goat anti-mouse IgG (NA166821) secondary antibody at 1/200 dilution (green). Immunofluorescence image showing cytoplasm and nucleus staining on HeLa cell line. Cytoplasmic actin is detected with Dylight® 554 Phalloidin (PD18466410) at 1/100 dilution (red).The nuclear counter stain is DAPI (blue).



AM8507b staining S100A2 in human skin tissue sections by Immunohistochemistry (IHC-P - paraformaldehyde-fixed, paraffin-embedded sections). Tissue was fixed with formaldehyde and blocked with 3% BSA for 0.5 hour at room temperature; antigen retrieval was by heat mediation with a citrate buffer (pH6). Samples were incubated with primary antibody (1/25) for 1 hour at 37°C. A undiluted biotinylated goat polyvalent antibody was used as the secondary antibody.

AM8507b staining S100A2 in human lung tissue sections by Immunohistochemistry (IHC-P - paraformaldehyde-fixed, paraffin-embedded sections). Tissue was fixed with formaldehyde and blocked with 3% BSA for 0.5 hour at room temperature; antigen retrieval was by heat mediation with a citrate buffer (pH6). Samples were incubated with primary antibody (1/25) for 1 hour at 37°C. A undiluted biotinylated goat polyvalent antibody was used as the secondary antibody.



All lanes : Anti-S100A2 Antibody at 1:4000 dilution Lane 1: A431 whole cell lysate Lane 2: HACAT whole cell lysate Lane 3: SW480 whole cell lysate Lysates/proteins at 20 μ g per lane. Secondary Goat Anti-mouse IgG, (H+L), Peroxidase conjugated at 1/10000 dilution. Predicted band size : 11 kDa Blocking/Dilution buffer: 5% NFDM/TBST.

Please note: All products are 'FOR RESEARCH USE ONLY. NOT FOR USE IN DIAGNOSTIC OR THERAPEUTIC PROCEDURES'.