

RAB27A Antibody

Purified Mouse Monoclonal Antibody (Mab)

Catalog # AM8511b

Product Information

Application	WB, FC, E
Primary Accession	P51159
Reactivity	Human, Rat, Mouse
Host	Mouse
Clonality	monoclonal
Isotype	IgG1,k
Clone Names	1590CT813.266.26
Calculated MW	24868

Additional Information

Gene ID	5873
Other Names	Ras-related protein Rab-27A, Rab-27, GTP-binding protein Ram, RAB27A, RAB27
Target/Specificity	This RAB27A antibody is generated from a mouse immunized with a recombinant protein of human RAB27A.
Dilution	WB~~1:2000 FC~~1:25 E~~Use at an assay dependent concentration.
Format	Purified monoclonal antibody supplied in PBS with 0.09% (W/V) sodium azide. This antibody is purified through a protein G column, followed by dialysis against PBS.
Storage	Maintain refrigerated at 2-8°C for up to 2 weeks. For long term storage store at -20°C in small aliquots to prevent freeze-thaw cycles.
Precautions	RAB27A Antibody is for research use only and not for use in diagnostic or therapeutic procedures.

Protein Information

Name	RAB27A
Synonyms	RAB27
Function	Small GTPase which cycles between active GTP-bound and inactive GDP-bound states. In its active state, binds to a variety of effector proteins to regulate homeostasis of late endocytic pathway, including endosomal positioning, maturation and secretion (PubMed: 30771381). Plays a role in

cytotoxic granule exocytosis in lymphocytes. Required for both granule maturation and granule docking and priming at the immunologic synapse.

Cellular Location

Membrane; Lipid-anchor. Melanosome. Late endosome. Lysosome.
Note=Identified by mass spectrometry in melanosome fractions from stage I to stage IV (PubMed:12643545, PubMed:17081065). Localizes to endosomal exocytic vesicles (PubMed:17237785).

Tissue Location

Found in all the examined tissues except in brain. Low expression was found in thymus, kidney, muscle and placenta Detected in melanocytes, and in most tumor cell lines examined Expressed in cytotoxic T-lymphocytes (CTL) and mast cells

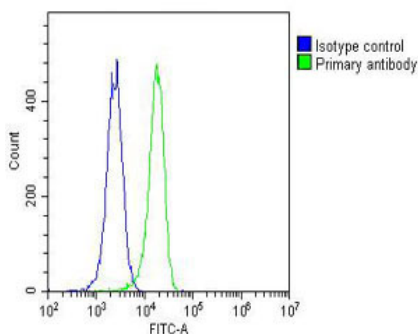
Background

Plays a role in cytotoxic granule exocytosis in lymphocytes. Required for both granule maturation and granule docking and priming at the immunologic synapse.

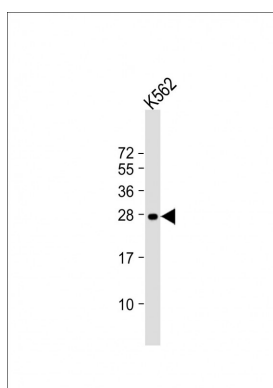
References

Seabra M.C.,et al.J. Biol. Chem. 270:24420-24427(1995).
Seabra M.C.,et al.Submitted (MAY-1999) to the EMBL/GenBank/DDBJ databases.
Chen D.,et al.Biochem. Mol. Med. 60:27-37(1997).
Tolmachova T.,et al.Gene 239:109-116(1999).
Hu R.-M.,et al.Proc. Natl. Acad. Sci. U.S.A. 97:9543-9548(2000).

Images



Overlay histogram showing K562 cells stained with AM8511b(green line). The cells were fixed with 2% paraformaldehyde (10 min) and then permeabilized with 90% methanol for 10 min. The cells were then incubated in 2% bovine serum albumin to block non-specific protein-protein interactions followed by the antibody (AM8511b, 1:25 dilution) for 60 min at 37°C. The secondary antibody used was Goat-Anti-Mouse IgG, DyLight® 488 Conjugated Highly Cross-Adsorbed(OJ192088) at 1/200 dilution for 40 min at 37°C. Isotype control antibody (blue line) was mouse IgG1 (1µg/1x10⁶ cells) used under the same conditions. Acquisition of >10, 000 events was performed.



Anti-RAB27A Antibody at 1:2000 dilution + K562 whole cell lysate Lysates/proteins at 20 µg per lane. Secondary Goat Anti-mouse IgG, (H+L), Peroxidase conjugated at 1/10000 dilution. Predicted band size : 25 kDa
Blocking/Dilution buffer: 5% NFDM/TBST.

Please note: All products are 'FOR RESEARCH USE ONLY. NOT FOR USE IN DIAGNOSTIC OR THERAPEUTIC PROCEDURES'.