

LAP2 Antibody

Purified Mouse Monoclonal Antibody (Mab)

Catalog # AM8519b

Product Information

Application	WB, E
Primary Accession	Q96RT1
Reactivity	Human, Rat, Mouse
Host	Mouse
Clonality	monoclonal
Isotype	IgG1,k
Clone Names	1617CT859.9.32
Calculated MW	158298

Additional Information

Gene ID	55914
Other Names	Protein LAP2, Densin-180-like protein, Erbb2-interacting protein, Erbin, ERBB2IP, ERBIN, KIAA1225, LAP2
Target/Specificity	This LAP2 antibody is generated from a mouse immunized with a recombinant protein of human LAP2.
Dilution	WB~~1:1000 E~~Use at an assay dependent concentration.
Format	Purified monoclonal antibody supplied in PBS with 0.09% (W/V) sodium azide. This antibody is purified through a protein G column, followed by dialysis against PBS.
Storage	Maintain refrigerated at 2-8°C for up to 2 weeks. For long term storage store at -20°C in small aliquots to prevent freeze-thaw cycles.
Precautions	LAP2 Antibody is for research use only and not for use in diagnostic or therapeutic procedures.

Protein Information

Name	ERBIN {ECO:0000303 PubMed:10878805}
Function	Acts as an adapter for the receptor ERBB2, in epithelia. By binding the unphosphorylated 'Tyr-1248' of receptor ERBB2, it may contribute to stabilize this unphosphorylated state (PubMed: 16203728). Inhibits NOD2-dependent NF-kappa-B signaling and pro-inflammatory cytokine secretion (PubMed: 16203728).

Cellular Location	Cell junction, hemidesmosome. Nucleus membrane. Basolateral cell membrane. Note=Found in hemidesmosomes, which are cell-substrate adhesion complexes in stratified epithelia. In transfected cells, either diffusely distributed over the cytoplasm or concentrated at the basolateral membrane. Colocalizes with the adrenergic receptors, ADREN1A and ADREN1B, at the nuclear membrane of cardiac myocytes (By similarity).
Tissue Location	Highly expressed in brain, heart, kidney, muscle and stomach, followed by liver, spleen and intestine

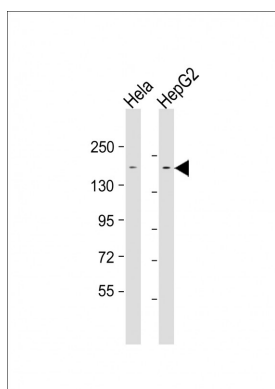
Background

Acts as an adapter for the receptor ERBB2, in epithelia. By binding the unphosphorylated 'Tyr-1248' of receptor ERBB2, it may contribute to stabilize this unphosphorylated state.

References

Borg J.-P.,et al.Nat. Cell Biol. 2:407-414(2000).
 Favre B.,et al.J. Biol. Chem. 276:32427-32436(2001).
 Nagase T.,et al.DNA Res. 6:337-345(1999).
 Nakajima D.,et al.DNA Res. 9:99-106(2002).
 Ota T.,et al.Nat. Genet. 36:40-45(2004).

Images



All lanes : Anti-LAP2 Antibody at 1:1000-1:2000 dilution
 Lane 1: HeLa whole cell lysate Lane 2: HepG2 whole cell lysate
 Lysates/proteins at 20 µg per lane. Secondary Goat Anti-mouse IgG, (H+L), Peroxidase conjugated at 1/10000 dilution.
 Predicted band size : 158 kDa
 Blocking/Dilution buffer: 5% NFDM/TBST.

Please note: All products are 'FOR RESEARCH USE ONLY. NOT FOR USE IN DIAGNOSTIC OR THERAPEUTIC PROCEDURES'.