

BANP Antibody

Purified Mouse Monoclonal Antibody (Mab)

Catalog # AM8526b

Product Information

Application	WB, IHC-P, E
Primary Accession	Q8N9N5
Reactivity	Human, Rat, Mouse
Host	Mouse
Clonality	monoclonal
Isotype	IgG1, κ
Clone Names	1524CT337.6.32
Calculated MW	56494

Additional Information

Gene ID	54971
Other Names	Protein BANP, BEN domain-containing protein 1, Btg3-associated nuclear protein, Scaffold/matrix-associated region-1-binding protein, BANP, BEND1, SMAR1
Target/Specificity	This BANP antibody is generated from a mouse immunized with a recombinant protein between 30-390 amino acids from human BANP.
Dilution	WB~~1:1000 IHC-P~~1:100~500 E~~Use at an assay dependent concentration.
Format	Purified monoclonal antibody supplied in PBS with 0.09% (W/V) sodium azide. This antibody is purified through a protein G column, followed by dialysis against PBS.
Storage	Maintain refrigerated at 2-8°C for up to 2 weeks. For long term storage store at -20°C in small aliquots to prevent freeze-thaw cycles.
Precautions	BANP Antibody is for research use only and not for use in diagnostic or therapeutic procedures.

Protein Information

Name	BANP
Synonyms	BEND1, SMAR1
Function	Controls V(D)J recombination during T-cell development by repressing T-cell receptor (TCR) beta enhancer function (By similarity). Binds to scaffold/matrix attachment region beta (S/MARbeta), an ATC-rich DNA sequence located

upstream of the TCR beta enhancer (By similarity). Represses cyclin D1 transcription by recruiting HDAC1 to its promoter, thereby diminishing H3K9ac, H3S10ph and H4K8ac levels (PubMed:[16166625](#)). Promotes TP53 activation, which causes cell cycle arrest (By similarity). Plays a role in the regulation of alternative splicing (PubMed:[26080397](#)). Binds to CD44 pre-mRNA and negatively regulates the inclusion of CD44 proximal variable exons v2-v6 but has no effect on distal variable exons v7-v10 (PubMed:[26080397](#)).

Cellular Location

Nucleus. Nucleus speckle. Cytoplasm Note=Primarily nuclear but translocates to the cytoplasm following MAPK1/MAPK3-mediated phosphorylation.

Tissue Location

Down-regulated in breast cancer cell lines.

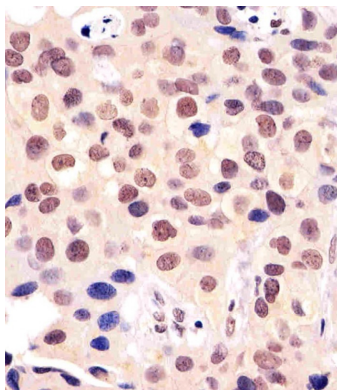
Background

Controls V(D)J recombination during T-cell development by repressing T-cell receptor (TCR) beta enhancer function. Binds to scaffold/matrix attachment region beta (S/MARbeta), an ATC-rich DNA sequence located upstream of the TCR beta enhancer. Represses cyclin D1 transcription by recruiting HDAC1 to its promoter, thereby diminishing H3K9ac, H3S10ph and H4K8ac levels. Promotes TP53 'Ser-15' phosphorylation and nuclear accumulation, which causes cell cycle arrest (By similarity).

References

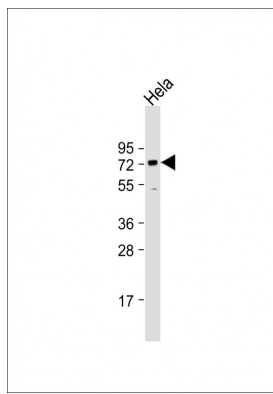
Ota T.,et al.Nat. Genet. 36:40-45(2004).
Martin J.,et al.Nature 432:988-994(2004).
Biro A.-M.,et al.Gene 253:189-196(2000).
Rampalli S.,et al.Mol. Cell. Biol. 25:8415-8429(2005).
Olsen J.V.,et al.Sci. Signal. 3:RA3-RA3(2010).

Images



AM8526b staining BANP in human breast carcinoma tissue sections by Immunohistochemistry (IHC-P - paraformaldehyde-fixed, paraffin-embedded sections). Tissue was fixed with formaldehyde and blocked with 3% BSA for 0.5 hour at room temperature; antigen retrieval was by heat mediation with a citrate buffer (pH6). Samples were incubated with primary antibody (1/25) for 1 hour at 37°C. A undiluted biotinylated goat polyvalent antibody was used as the secondary antibody.

Anti-BANP Antibody at 1:1000 dilution + Hela whole cell lysate Lysates/proteins at 20 µg per lane. Secondary Goat Anti-mouse IgG, (H+L), Peroxidase conjugated at 1/10000 dilution. Predicted band size : 56 kDa Blocking/Dilution buffer: 5% NFDM/TBST.



Please note: All products are 'FOR RESEARCH USE ONLY. NOT FOR USE IN DIAGNOSTIC OR THERAPEUTIC PROCEDURES'.