

WBP2 Antibody (C-term)[Knockdown Validated]

Purified Mouse Monoclonal Antibody (Mab)

Catalog # AM8599b

Product Information

Application	WB, E
Primary Accession	Q969T9
Reactivity	Human, Mouse
Host	Mouse
Clonality	monoclonal
Isotype	IgG1
Clone Names	932CT1.3.7
Calculated MW	28087

Additional Information

Gene ID	23558
Other Names	WW domain-binding protein 2, WBP-2, WBP2
Target/Specificity	This WBP2 antibody is generated from a mouse immunized with a recombinant protein between 1-261 amino acids from the C-terminal region of human WBP2.
Dilution	WB~~1:2000 E~~Use at an assay dependent concentration.
Format	Purified monoclonal antibody supplied in PBS with 0.09% (W/V) sodium azide. This antibody is purified through a protein G column, followed by dialysis against PBS.
Storage	Maintain refrigerated at 2-8°C for up to 2 weeks. For long term storage store at -20°C in small aliquots to prevent freeze-thaw cycles.
Precautions	WBP2 Antibody (C-term)[Knockdown Validated] is for research use only and not for use in diagnostic or therapeutic procedures.

Protein Information

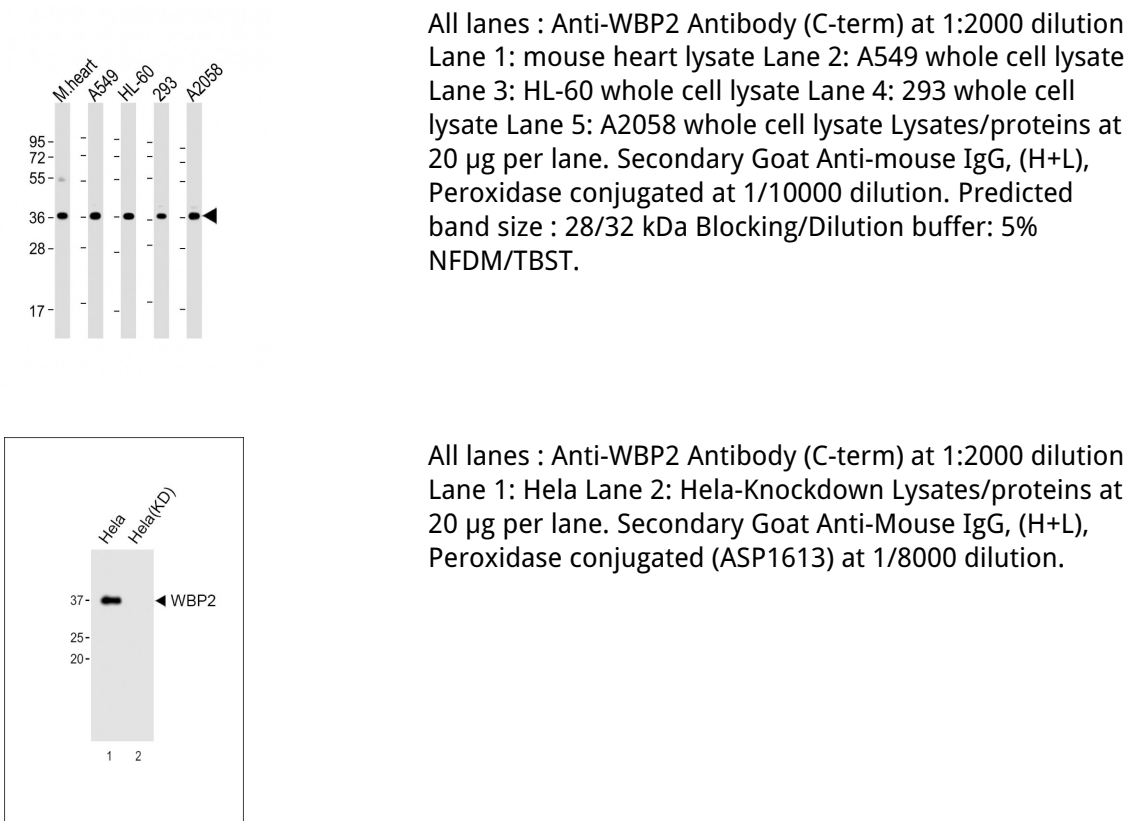
Name	WBP2 (HGNC:12738)
Function	Acts as a transcriptional coactivator of estrogen and progesterone receptors (ESR1 and PGR) upon hormone activation (PubMed: 16772533). In presence of estrogen, binds to ESR1-responsive promoters (PubMed: 16772533). Synergizes with YAP1 to enhance PGR activity (PubMed: 16772533). Modulates expression of post-synaptic scaffolding proteins via regulation of ESR1, ESR2 and PGR (By similarity).

Cellular Location	Cytoplasm. Nucleus. Note=Translocates from cytoplasm to nucleus when phosphorylated.
Tissue Location	Ubiquitous.

References

Chen H.I.,et al.J. Biol. Chem. 272:17070-17077(1997).
Pirozzi G.,et al.J. Biol. Chem. 272:14611-14616(1997).
Burkard T.R.,et al.BMC Syst. Biol. 5:17-17(2011).

Images



Please note: All products are 'FOR RESEARCH USE ONLY. NOT FOR USE IN DIAGNOSTIC OR THERAPEUTIC PROCEDURES'.