

# ME2 Antibody (C-term)

Purified Mouse Monoclonal Antibody (Mab)

Catalog # AM8621b

## Product Information

---

<b>Application</b>	WB, IHC-P, E
<b>Primary Accession</b>	<a href="#">P23368</a>
<b>Reactivity</b>	Human, Mouse
<b>Host</b>	Mouse
<b>Clonality</b>	monoclonal
<b>Isotype</b>	IgG1,k
<b>Clone Names</b>	970CT2.1.1.2
<b>Calculated MW</b>	65444

## Additional Information

---

<b>Gene ID</b>	4200
<b>Other Names</b>	NAD-dependent malic enzyme, mitochondrial, NAD-ME, 1.1.1.38, Malic enzyme 2, ME2
<b>Target/Specificity</b>	This ME2 antibody is generated from a mouse immunized with a KLH conjugated synthetic peptide between 522-556 amino acids from the C-terminal region of human ME2.
<b>Dilution</b>	WB~~1:4000 IHC-P~~1:100~500 E~~Use at an assay dependent concentration.
<b>Format</b>	Purified monoclonal antibody supplied in PBS with 0.09% (W/V) sodium azide. This antibody is purified through a protein G column, followed by dialysis against PBS.
<b>Storage</b>	Maintain refrigerated at 2-8°C for up to 2 weeks. For long term storage store at -20°C in small aliquots to prevent freeze-thaw cycles.
<b>Precautions</b>	ME2 Antibody (C-term) is for research use only and not for use in diagnostic or therapeutic procedures.

## Protein Information

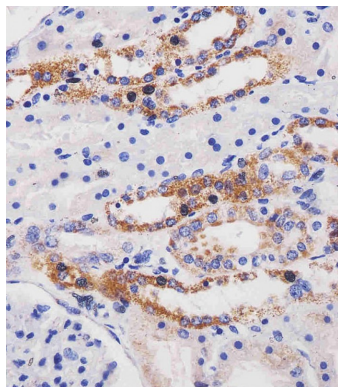
---

<b>Name</b>	ME2
<b>Function</b>	NAD-dependent mitochondrial malic enzyme that catalyzes the oxidative decarboxylation of malate to pyruvate.
<b>Cellular Location</b>	Mitochondrion matrix

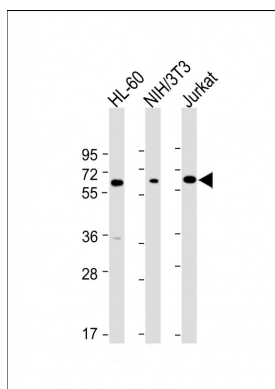
## References

Loeber G.,et al.J. Biol. Chem. 266:3016-3021(1991).  
Yanaihara N.,et al.Genomics 72:169-179(2001).  
Ota T.,et al.Nat. Genet. 36:40-45(2004).  
Nusbaum C.,et al.Nature 437:551-555(2005).  
Mural R.J.,et al.Submitted (JUL-2005) to the EMBL/GenBank/DDBJ databases.

## Images



AM8621b staining ME2 in human kidney tissue sections by Immunohistochemistry (IHC-P - paraformaldehyde-fixed, paraffin-embedded sections). Tissue was fixed with formaldehyde and blocked with 3% BSA for 0.5 hour at room temperature; antigen retrieval was by heat mediation with a citrate buffer (pH6). Samples were incubated with primary antibody (1/25) for 1 hours at 37°C. A undiluted biotinylated goat polyvalent antibody was used as the secondary antibody.



All lanes : Anti-ME2 Antibody (C-term) at 1:4000 dilution  
Lane 1: HL-60 whole cell lysate Lane 2: NIH/3T3 whole cell lysate Lane 3: Jurkat whole cell lysate Lysates/proteins at 20 µg per lane. Secondary Goat Anti-mouse IgG, (H+L), Peroxidase conjugated at 1/10000 dilution. Predicted band size : 65 kDa Blocking/Dilution buffer: 5% NFDM/TBST.

Please note: All products are 'FOR RESEARCH USE ONLY. NOT FOR USE IN DIAGNOSTIC OR THERAPEUTIC PROCEDURES'.